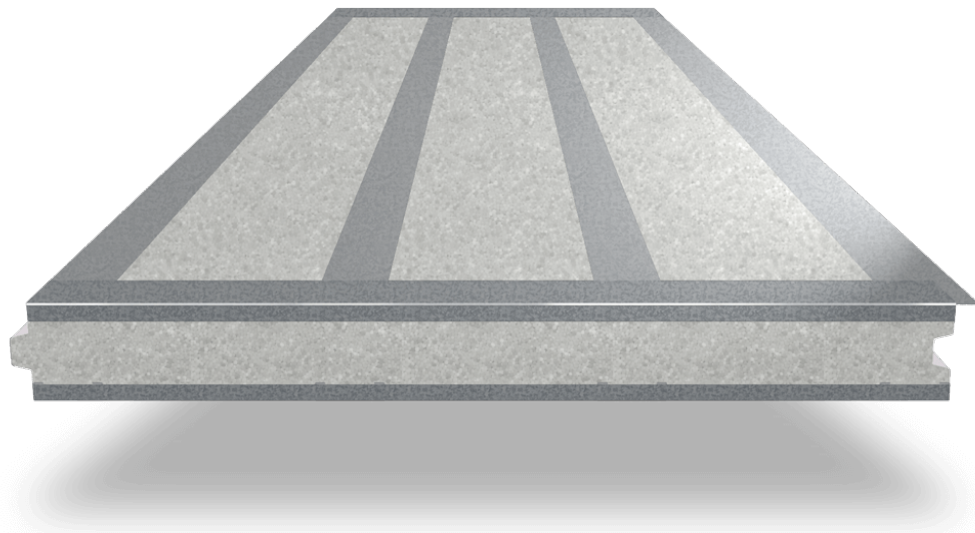




THERMASTEELTM
ADVANCED PANEL SYSTEM

Standard Panel Program



609 West Rock Road.
Radford, VA 24141
O: 540.633.5000

E: sales@thermasteelinc.com
W: thermasteelinc.com



609 West Rock Road.
Radford, VA 24141
O: 540.633.5000
E: sales@thermasteelinc.com
W: thermasteelinc.com

Dear Valued Client,

Welcome to the ThermaSteel Builder's Suite Standard Panel Program! In this catalog you will find the "off-the-shelf" offerings from ThermaSteel, ideal for the following:

- "Spec Houses"
- Simple 1 to 2 Story Single or Multi-Family Residences
- Tiny Homes & ADUs
- Backyard Sheds and Structures
- Workshops
- Walk-In Coolers & Freezers
- In-Fill for Superstructures
- Home Additions & More.....

Advantages:

- 1) Structure, Insulation, Sheathing, and Vapor Barrier – All-In-One!
- 2) Cost Effective & Efficient (Build Fast with Minimal Experience)
- 3) Superior Effective R-Values & Thermal Performance
- 4) Minimal to No Waste
- 5) Lightweight and Easy to Maneuver
- 6) IRC & IBC Approved

Additionally, ThermaSteel's EPS blanks are also great for insulating existing structures such as basements and attics!

Note: standard panel program does not include shop drawings or engineering. Please check with local permitting authorities for local requirements and restrictions. For complex structures outside of the scope of this program, please submit architectural drawings for estimating through our Contact Us form at <https://thermasteelinc.com/>.

Sincerely,

The ThermaSteel Team



609 West Rock Road.
Radford, VA 24141
O: 540.633.5000
E: sales@thermasteelinc.com
W: thermasteelinc.com

Available Panel Types and Sizes

Panel Number	Type	Available Thickness (")			Nominal Opening Size		Rough Opening Size		Standard Panel Sizes						
		3.5	5.5	7.5	W (")	H (")	W (")	H (")	4'x4'	4'x6'	4'x8'	4'x9'	4'x10'	4'x11'	4'x12'
001	Exterior Wall	✓	✓	✓	NA					✓	✓	✓	✓	✓	✓
002	Exterior Wall	✓	✓	✓						✓	✓	✓	✓	✓	✓
003	Exterior Wall	✓	✓	✓						✓	✓	✓	✓	✓	✓
004	Interior Wall	✓	✓	✓						✓	✓	✓	✓	✓	✓
005	Roof	✓	✓	✓						✓	✓	✓	✓	✓	✓
006	Exterior Door	✓	✓	✓	32	80	To Door Spec				✓	✓	✓	✓	✓
007	Exterior Door	✓	✓	✓	36	80	To Door Spec				✓	✓	✓	✓	✓
008	Interior Door	✓	✓	✓	30	80	To Door Spec				✓	✓	✓	✓	✓
009	Interior Door	✓	✓	✓	32	80	To Door Spec				✓	✓	✓	✓	✓
010	Interior Door	✓	✓	✓	36	80	To Door Spec				✓	✓	✓	✓	✓
011	Exterior Window	✓	✓	✓	17.5	17.5	18	18			✓	✓	✓	✓	✓
012	Exterior Window	✓	✓	✓	23.5	23.5	24	24			✓	✓	✓	✓	✓
013	Exterior Window	✓	✓	✓	23.5	35.5	24	36			✓	✓	✓	✓	✓
014	Exterior Window	✓	✓	✓	23.5	47.5	24	48			✓	✓	✓	✓	✓
015	Exterior Window	✓	✓	✓	23.5	59.5	24	60			✓	✓	✓	✓	✓
016	Exterior Window	✓	✓	✓	29.5	23.5	30	24			✓	✓	✓	✓	✓
017	Exterior Window	✓	✓	✓	29.5	35.5	30	36			✓	✓	✓	✓	✓
018	Exterior Window	✓	✓	✓	29.5	47.5	30	48			✓	✓	✓	✓	✓
019	Exterior Window	✓	✓	✓	29.5	59.5	30	60			✓	✓	✓	✓	✓
020	Exterior Window	✓	✓	✓	31.5	23.5	32	24			✓	✓	✓	✓	✓
021	Exterior Window	✓	✓	✓	31.5	35.5	32	36			✓	✓	✓	✓	✓
022	Exterior Window	✓	✓	✓	31.5	47.5	32	48			✓	✓	✓	✓	✓
023	Exterior Window	✓	✓	✓	31.5	59.5	32	60			✓	✓	✓	✓	✓
024	Exterior Window	✓	✓	✓	33.5	23.5	34	24			✓	✓	✓	✓	✓
025	Exterior Window	✓	✓	✓	33.5	35.5	34	36			✓	✓	✓	✓	✓
026	Exterior Window	✓	✓	✓	33.5	47.5	34	48			✓	✓	✓	✓	✓
027	Exterior Window	✓	✓	✓	33.5	59.5	34	60			✓	✓	✓	✓	✓
028	Exterior Window	✓	✓	✓	35.5	23.5	36	24			✓	✓	✓	✓	✓
029	Exterior Window	✓	✓	✓	35.5	35.5	36	36			✓	✓	✓	✓	✓
030	Exterior Window	✓	✓	✓	35.5	47.5	36	48			✓	✓	✓	✓	✓
031	Exterior Window	✓	✓	✓	35.5	59.5	36	60			✓	✓	✓	✓	✓
032	Gable Cut (4:12 Pitch)*	✓	✓	✓	NA				✓	✓	✓				
033	Gable Cut (5:12 Pitch)*	✓	✓	✓					✓	✓	✓				
034	Gable Cut (6:12 Pitch)*	✓	✓	✓					✓	✓	✓				
035	Gable Cut (7:12 Pitch)*	✓	✓	✓					✓	✓	✓				
036	Gable Cut (8:12 Pitch)*	✓	✓	✓					✓	✓	✓				
037	Gable Cut (9:12 Pitch)*	✓	✓	✓					✓	✓	✓				
038	Gable Cut (10:12 Pitch)*	✓	✓	✓					✓	✓	✓				

Notes:

*Height of gable panels is from bottom of panel to peak of gable.

1) All window rough openings are 80" from top of window opening to bottom of panel.

2) Additional panel heights up to 12' available by special request. Please contact your sales representative.



Current Stand Panel Pricing Schedule (DIY)

Updated 10/4/2022

Standard Panels, No Rough Openings											
	Type	Thickness	Density	R-Value	Gauge	4'x6'	4'x8'	4'x9'	4'x10'	4'x11'	4'x12'
3.5"	3.5" 24 Gauge 1.5 Density	3.5	1.5	R-23	24	\$212.18	\$282.91	\$318.28	\$353.64	\$389.00	\$ 424.37
	3.5" 20 Gauge 1.5 Density	3.5	1.5	R-23	20	\$227.05	\$302.74	\$340.58	\$378.42	\$416.26	\$ 454.10
	3.5" 18 Gauge 1.5 Density	3.5	1.5	R-23	18	\$242.17	\$322.90	\$363.26	\$403.62	\$443.98	\$ 484.34
	3.5" 16 Gauge 1.5 Density	3.5	1.5	R-23	16	\$257.04	\$342.72	\$385.56	\$428.40	\$471.24	\$ 514.08
5.5"	5.5" 24 Gauge 1.0 Density	5.5	1.0	R-35	24	\$216.22	\$288.29	\$324.32	\$360.36	\$396.40	\$ 432.43
	5.5" 20 Gauge 1.0 Density	5.5	1.0	R-35	20	\$255.78	\$341.04	\$383.67	\$426.30	\$468.93	\$ 511.56
	5.5" 18 Gauge 1.0 Density	5.5	1.0	R-35	18	\$278.21	\$370.94	\$417.31	\$463.68	\$510.05	\$ 556.42
	5.5" 16 Gauge 1.0 Density	5.5	1.0	R-35	16	\$300.64	\$400.85	\$450.95	\$501.06	\$551.17	\$ 601.27
7.5"	7.5" 24 Gauge 1.0 Density	7.5	1.0	R-47	24	\$232.60	\$310.13	\$348.89	\$387.66	\$426.43	\$ 465.19
	7.5" 20 Gauge 1.0 Density	7.5	1.0	R-47	20	\$272.41	\$363.22	\$408.62	\$454.02	\$499.42	\$ 544.82
	7.5" 18 Gauge 1.0 Density	7.5	1.0	R-47	18	\$294.84	\$393.12	\$442.26	\$491.40	\$540.54	\$ 589.68
	7.5" 16 Gauge 1.0 Density	7.5	1.0	R-47	16	\$317.27	\$423.02	\$475.90	\$528.78	\$581.66	\$ 634.54



Standard Panels with Rough Openings										
	Type	Thickness	Density	R-Value	Gauge	4'x8'	4'x9'	4'x10'	4'x11'	4'x12'
3.5"	3.5" 24 Gauge 1.5 Density	3.5	1.5	R-23	24	\$313.15	\$352.30	\$391.44	\$410.08	\$469.73
	3.5" 20 Gauge 1.5 Density	3.5	1.5	R-23	20	\$332.98	\$374.60	\$416.22	\$436.04	\$499.46
	3.5" 18 Gauge 1.5 Density	3.5	1.5	R-23	18	\$353.14	\$397.28	\$441.42	\$462.44	\$529.70
	3.5" 16 Gauge 1.5 Density	3.5	1.5	R-23	16	\$369.94	\$416.18	\$462.42	\$484.44	\$554.90
5.5"	5.5" 24 Gauge 1.0 Density	5.5	1.0	R-35	24	\$318.53	\$358.34	\$398.16	\$417.12	\$477.79
	5.5" 20 Gauge 1.0 Density	5.5	1.0	R-35	20	\$371.28	\$417.69	\$464.10	\$486.20	\$556.92
	5.5" 18 Gauge 1.0 Density	5.5	1.0	R-35	18	\$401.18	\$451.33	\$501.48	\$525.36	\$601.78
	5.5" 16 Gauge 1.0 Density	5.5	1.0	R-35	16	\$431.09	\$484.97	\$538.86	\$564.52	\$646.63
7.5"	7.5" 24 Gauge 1.0 Density	7.5	1.0	R-47	24	\$340.37	\$382.91	\$425.46	\$445.72	\$510.55
	7.5" 20 Gauge 1.0 Density	7.5	1.0	R-47	20	\$393.46	\$442.64	\$491.82	\$515.24	\$590.18
	7.5" 18 Gauge 1.0 Density	7.5	1.0	R-47	18	\$423.36	\$476.28	\$529.20	\$554.40	\$635.04
	7.5" 16 Gauge 1.0 Density	7.5	1.0	R-47	16	\$453.26	\$509.92	\$566.58	\$593.56	\$679.90



THERMASTEELTM
ADVANCED PANEL SYSTEM

Gable Cut Panels								
	Type	Thickness	Density	R-Value	Gauge	4'x4'	4'x6'	4'x8'
3.5"	3.5" 24 Gauge 1.5 Density	3.5	1.5	R-23	24	\$166.46	\$237.18	\$307.91
	3.5" 20 Gauge 1.5 Density	3.5	1.5	R-23	20	\$176.37	\$252.05	\$327.74
	3.5" 18 Gauge 1.5 Density	3.5	1.5	R-23	18	\$186.45	\$267.17	\$347.90
	3.5" 16 Gauge 1.5 Density	3.5	1.5	R-23	16	\$196.36	\$282.04	\$367.72
5.5"	5.5" 24 Gauge 1.0 Density	5.5	1.0	R-35	24	\$169.14	\$241.22	\$313.29
	5.5" 20 Gauge 1.0 Density	5.5	1.0	R-35	20	\$195.52	\$280.78	\$366.04
	5.5" 18 Gauge 1.0 Density	5.5	1.0	R-35	18	\$210.47	\$303.21	\$395.94
	5.5" 16 Gauge 1.0 Density	5.5	1.0	R-35	16	\$225.42	\$325.64	\$425.85
7.5"	7.5" 24 Gauge 1.0 Density	7.5	1.0	R-47	24	\$180.06	\$257.60	\$335.13
	7.5" 20 Gauge 1.0 Density	7.5	1.0	R-47	20	\$206.61	\$297.41	\$388.22
	7.5" 18 Gauge 1.0 Density	7.5	1.0	R-47	18	\$221.56	\$319.84	\$418.12
	7.5" 16 Gauge 1.0 Density	7.5	1.0	R-47	16	\$236.51	\$342.27	\$448.02



THERMASTEEL™ ADVANCED PANEL SYSTEM

EPS Blanks - No Steel									
Type	Thickness	Density	R-Value	Gauge	4'x8'	4'x9'	4'x10'	4'x11'	4'x12'
3.5" EPS Blank	3.5	1.5	R-23	NA	\$ 62.16	\$ 69.93	\$ 77.70	\$ 81.40	\$ 93.24
5.5" EPS Blank	5.5	1.0	R-35	NA	\$ 68.88	\$ 77.49	\$ 86.10	\$ 90.20	\$103.32
7.5" EPS Blank	7.5	1.0	R-47	NA	\$ 78.29	\$ 88.07	\$ 97.86	\$102.52	\$117.43

Accessories			
QTY	Type	Gauge	Price
EA	Attachment Plates*	20	\$ 0.50
LF	3.5" Metal Track**	18	\$ 2.60
LF	5.5" Metal Track**	18	\$ 3.50
LF	7.5" Metal Track**	18	\$ 4.50
LF	Outside Corner Metal (8'') **	24	\$ 2.00
LF	Inside Corner Metal (2.5"x2.5'') **	20	\$ 1.00
LF	Flat Metal (3'') **	24	\$ 2.00
EA	Small Self Tapping Waffle Head Screws***	18	\$ 0.07

*Sold in quantities of 25

**Sold in 10' sections

***Sold in quantities of 1000

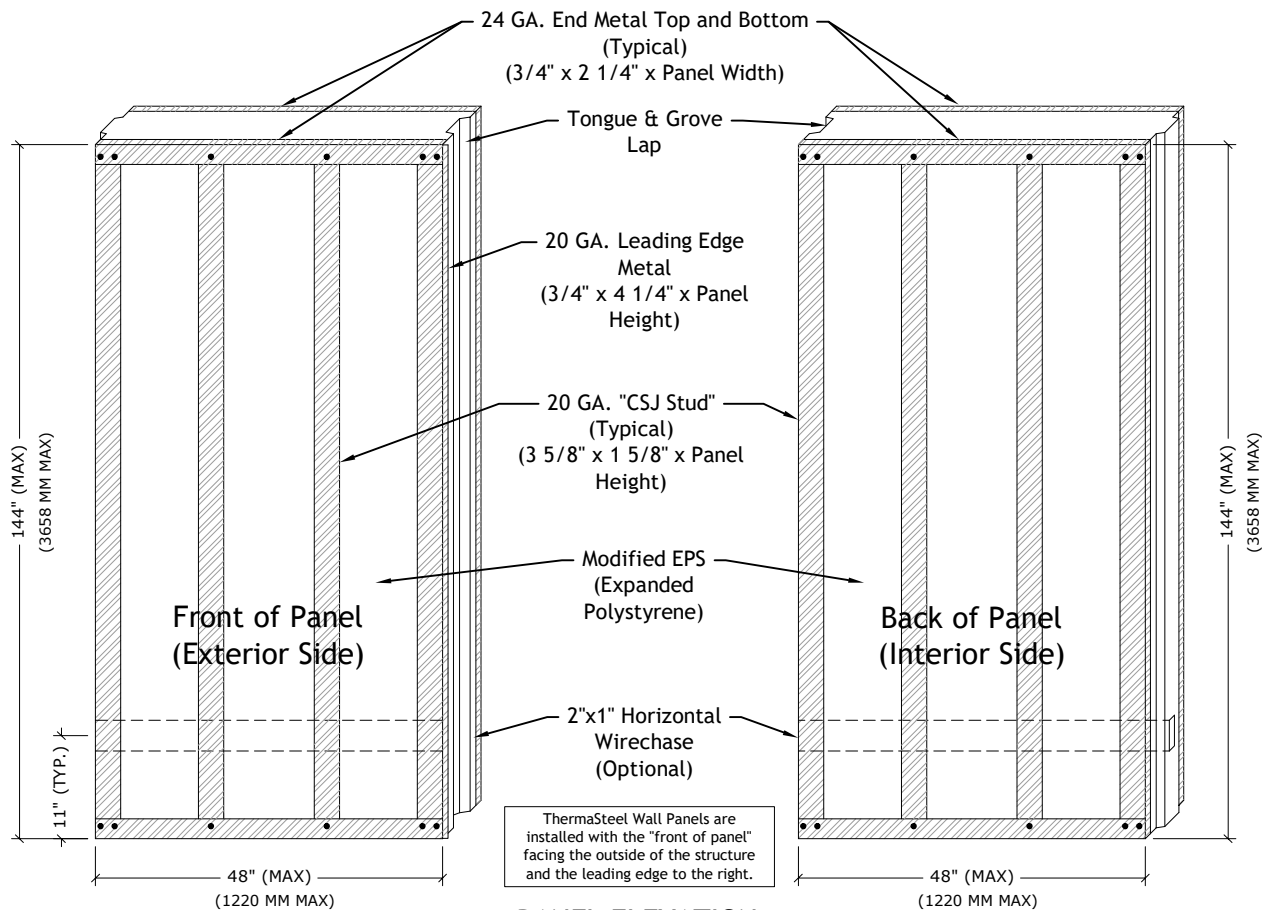
Important Notes:

- 1) Prices do not include shipping.
- 2) Sales tax will be added for orders delivered within the state of Virginia.
- 3) All orders cancelled after initial payment are subject to a 25% processing fee.
- 4) No returns/refunds outside of ThermaSteel's standard warranty policy.

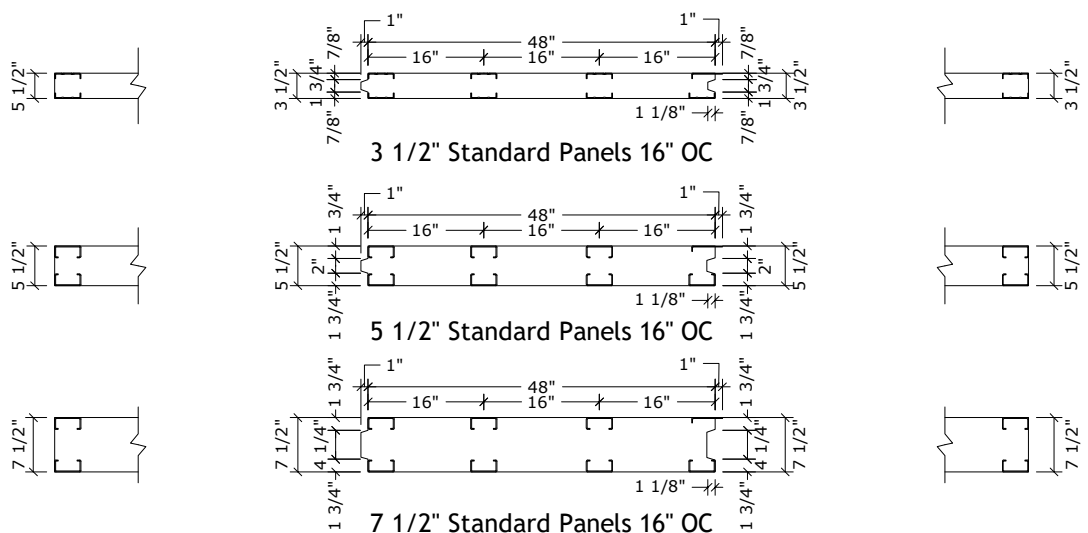


Typical Standard Panel Drawings & Connection Details

(More details available at <https://thermasteel.zmartive.com/wp-content/uploads/thermasteel-connection-details.pdf>)



PANEL ELEVATION



BOTTOM VIEW

FOR ALL PANEL THICKNESSES
(ALL DIMENSIONS TAKEN FROM EXTERIOR SURFACE)



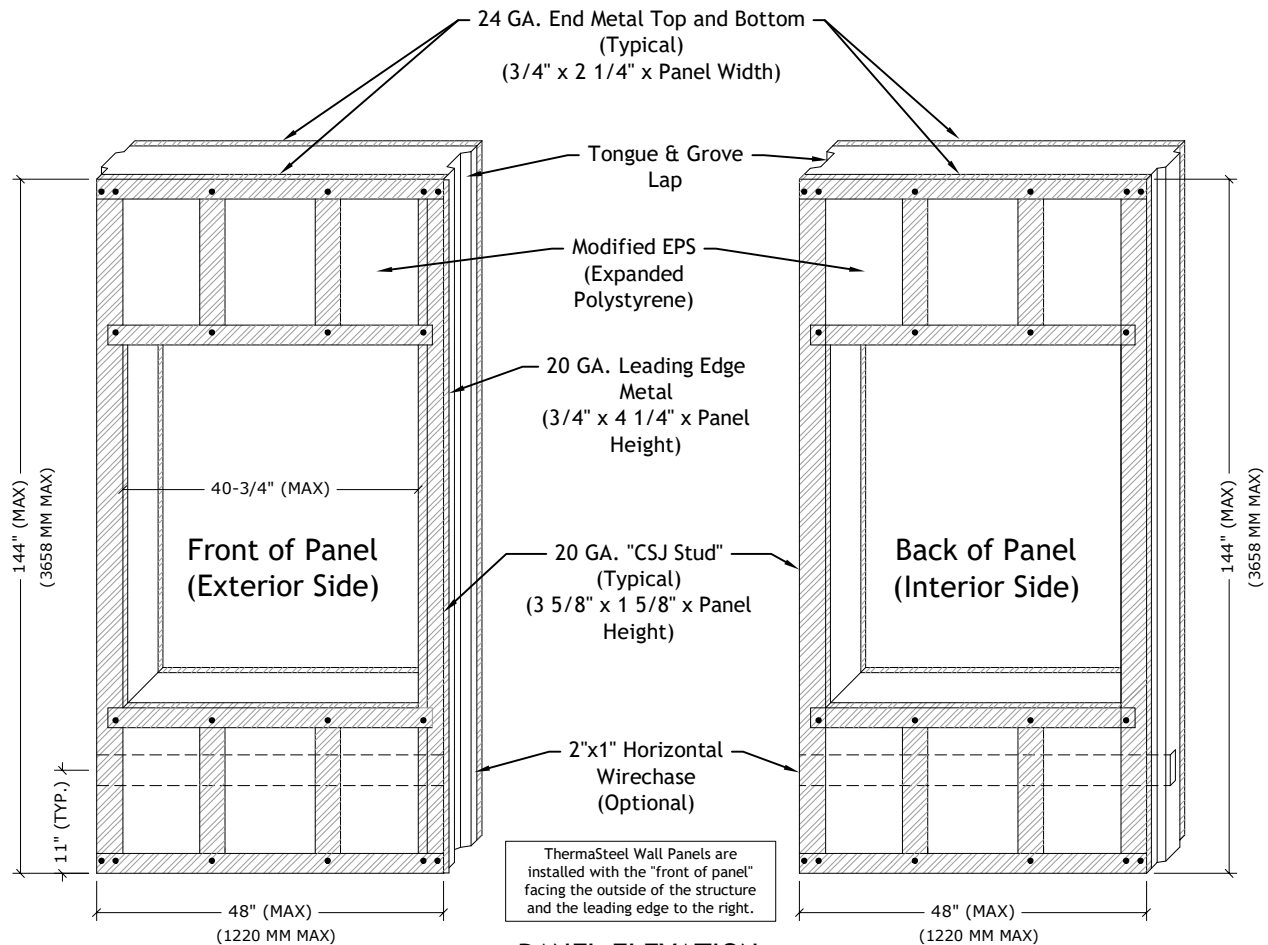
THERMASTEEL™
ADVANCED PANEL SYSTEMS

Basic Panels

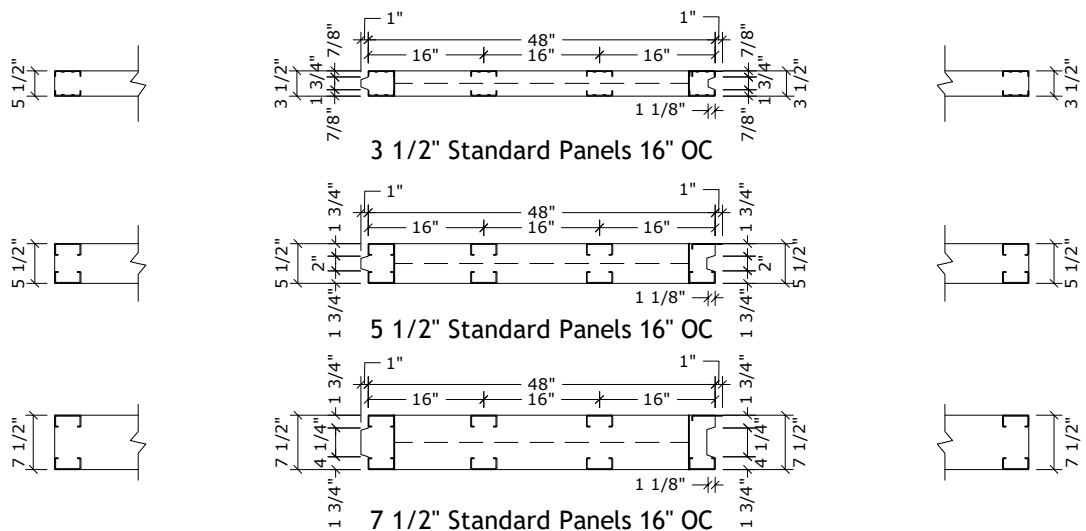
16" O.C. Wall Panel

Not To Scale
Rev: 11/30/2021
Drawing Number

BP-003



PANEL ELEVATION



BOTTOM VIEW

FOR ALL PANEL THICKNESSES
(ALL DIMENSIONS TAKEN FROM EXTERIOR SURFACE)

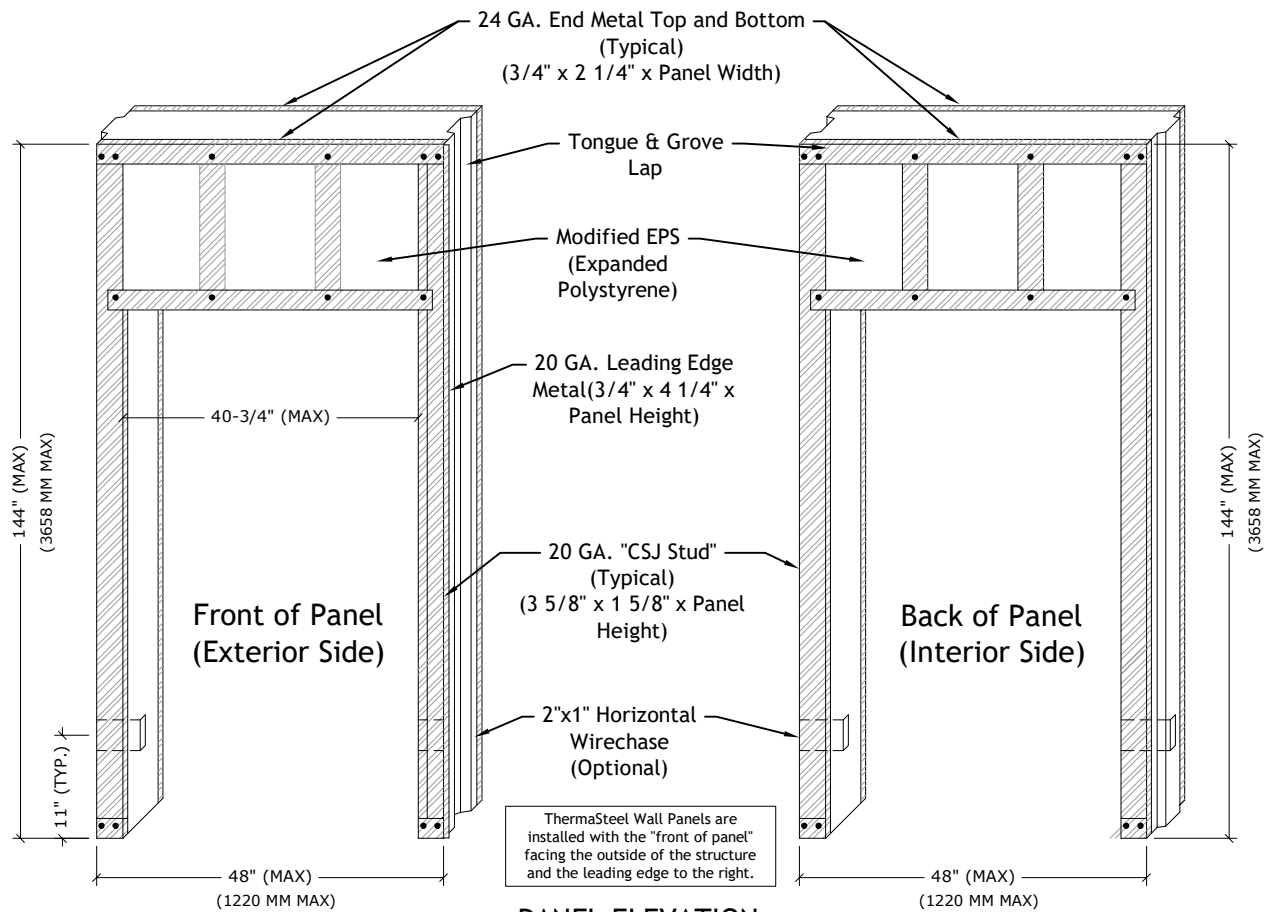


THERMASTEEL™
ADVANCED PANEL SYSTEMS

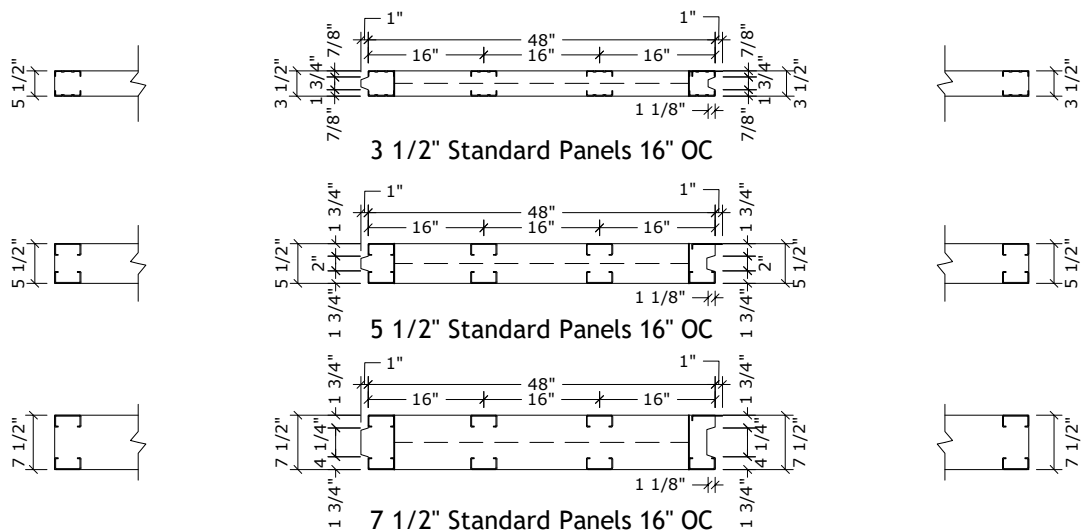
Basic Panels

Window Opening
Wall Panel

Not To Scale
Rev: 11/30/2021
Drawing Number
BP-005



PANEL ELEVATION



BOTTOM VIEW

FOR ALL PANEL THICKNESSES
(ALL DIMENSIONS TAKEN FROM EXTERIOR SURFACE)



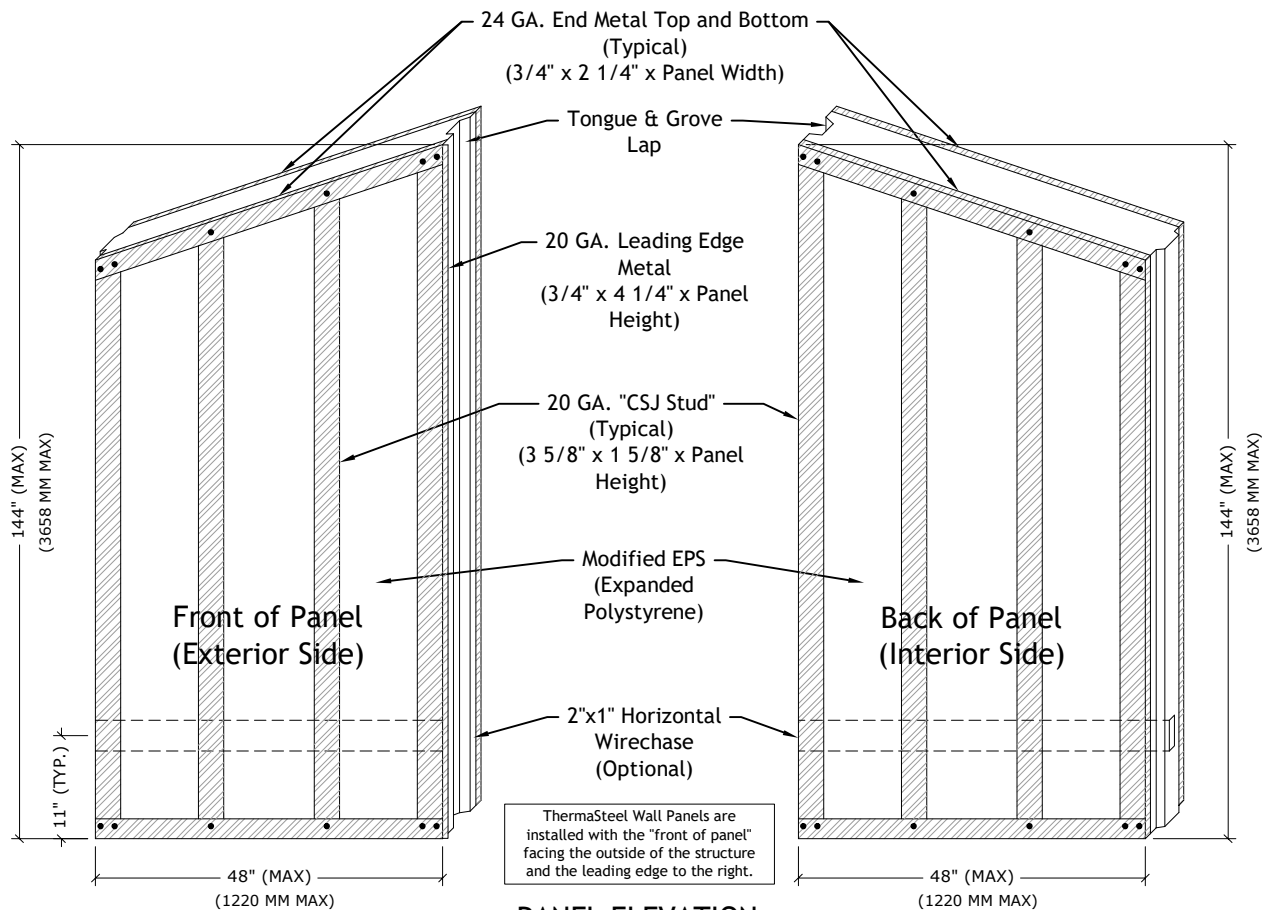
THERMASTEEL™
ADVANCED PANEL SYSTEMS

Basic Panels

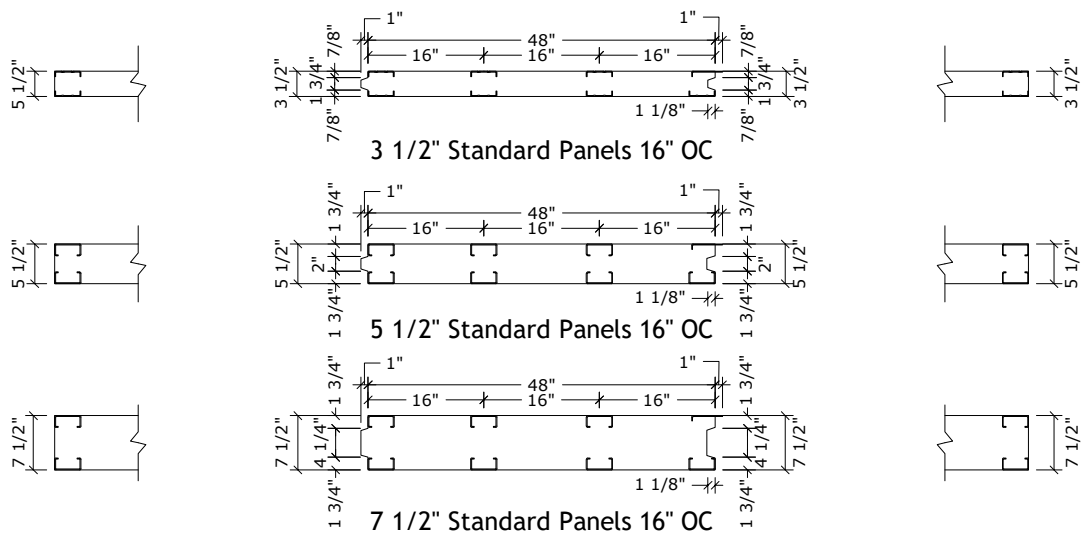
Door Opening
Wall Panel

Not To Scale
Rev: 11/30/2021
Drawing Number
BP-006

THERMASTEEL ADVANCED PANEL SYSTEMS - MANUFACTURED BY THERMASTEEL RP Ltd.
609 WEST ROCK ROAD RADFORD, VA 24141 PHONE (540) 633-5000 FAX (540) 633-5001
www.thermasteelinc.com



PANEL ELEVATION



BOTTOM VIEW

FOR ALL PANEL THICKNESSES
(ALL DIMENSIONS TAKEN FROM EXTERIOR SURFACE)



THERMASTEEL™
ADVANCED PANEL SYSTEMS

Basic Panels

Gable
Wall Panel

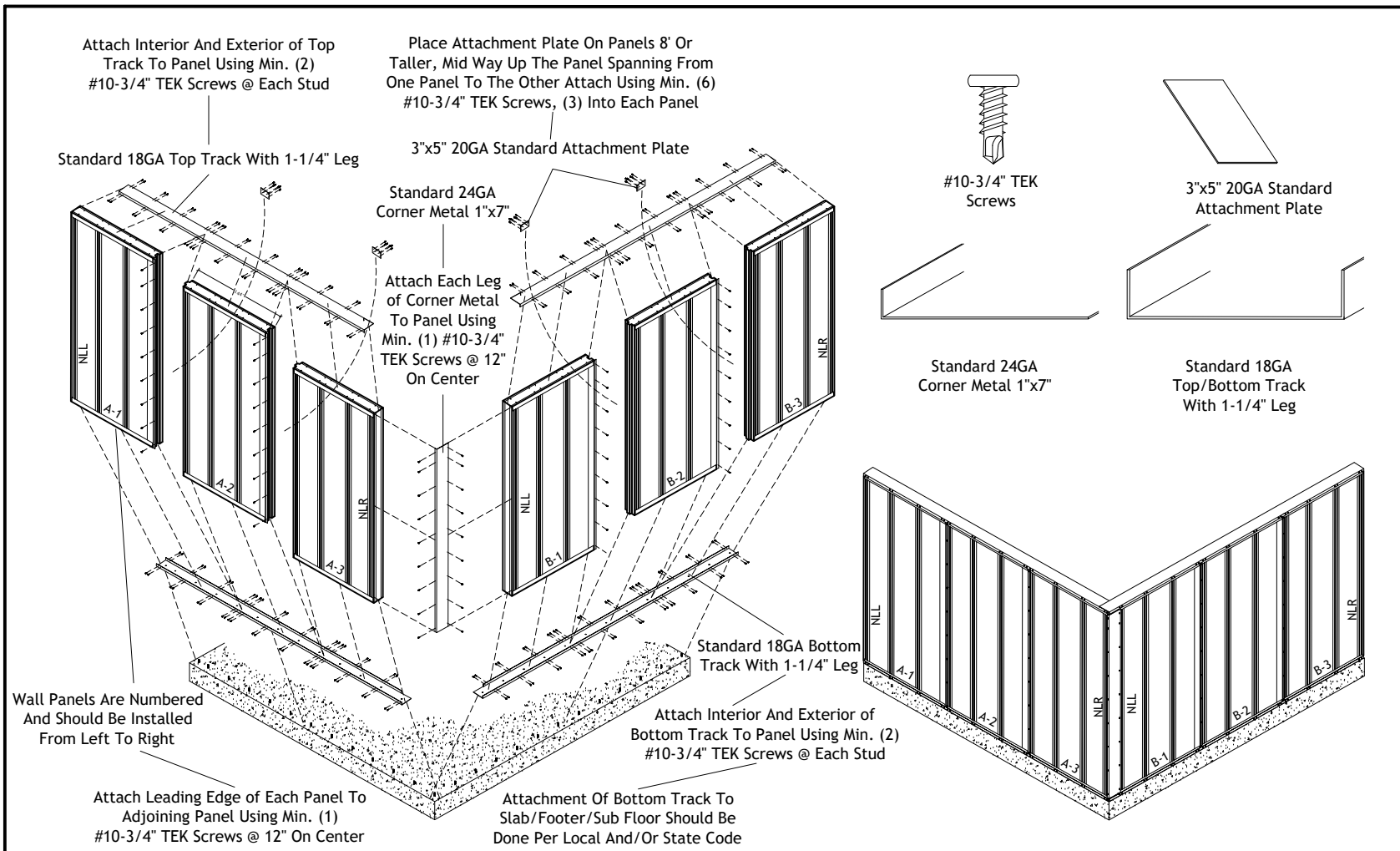
Not To Scale

Rev: 11/30/2021

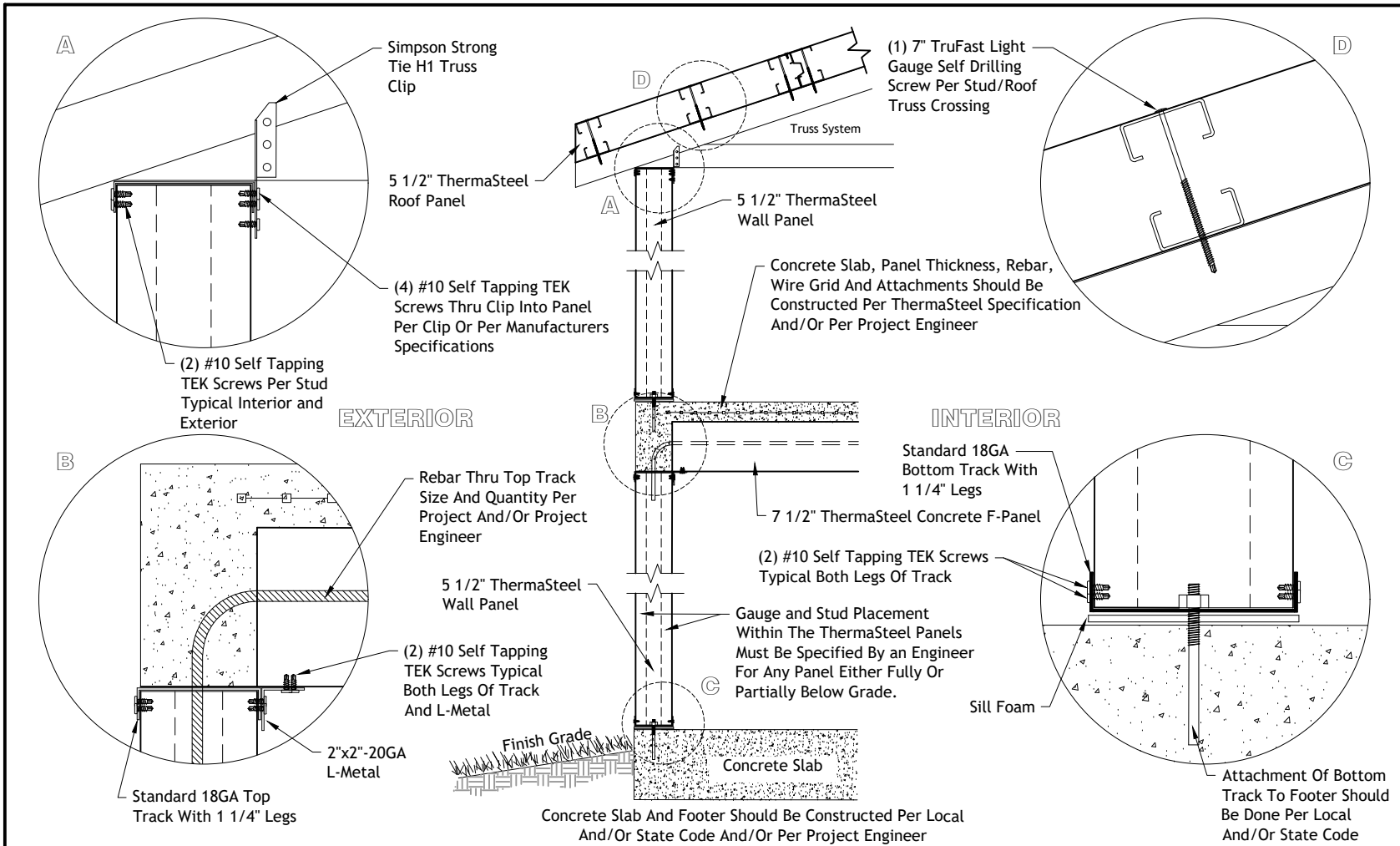
Drawing Number

BP-003

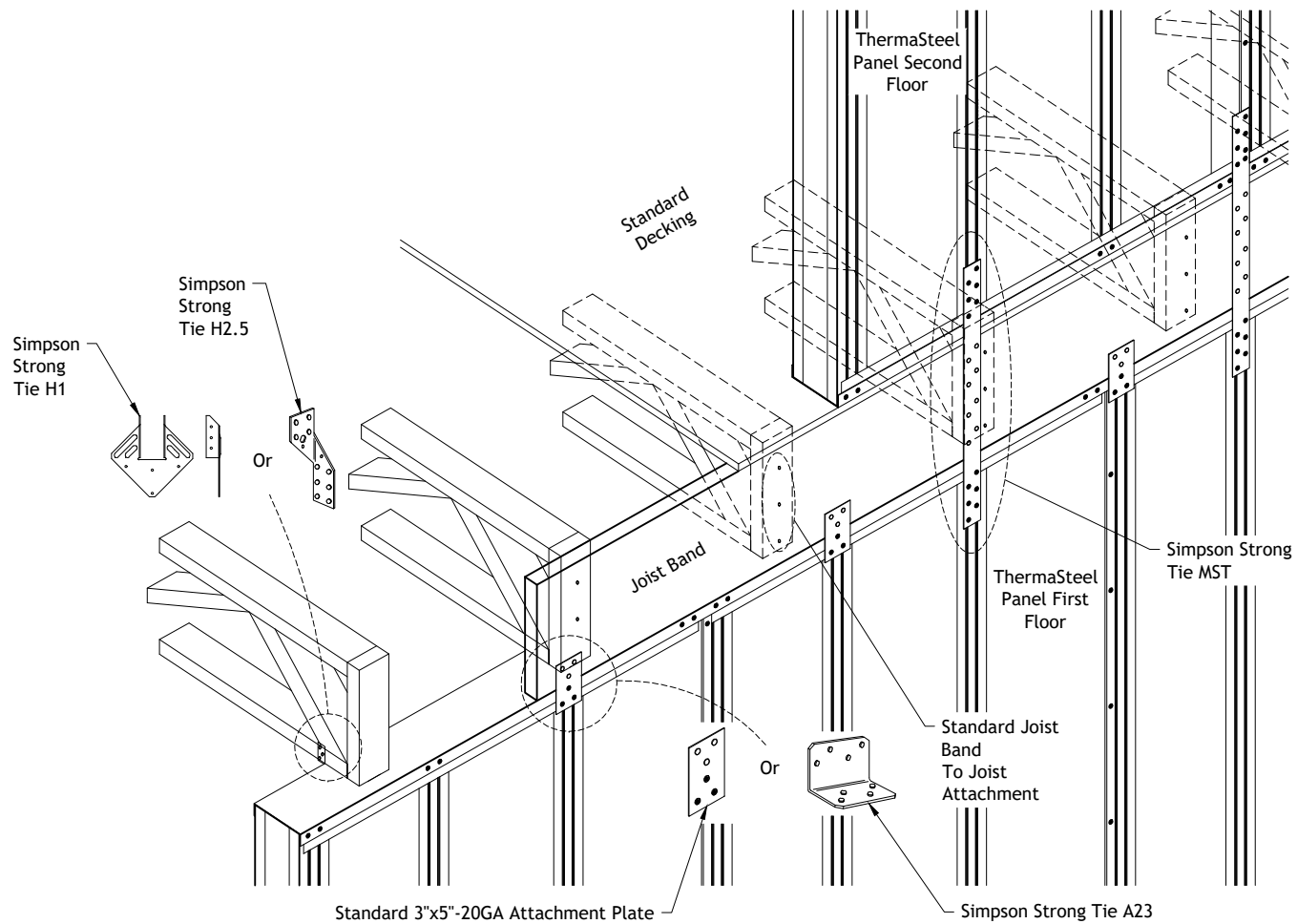
THERMASTEEL ADVANCED PANEL SYSTEMS - MANUFACTURED BY THERMASTEEL RP Ltd.
609 WEST ROCK ROAD RADFORD, VA 24141 PHONE (540) 633-5000 FAX (540) 633-5001
www.thermasteelinc.com



 THERMASTEEL™ ADVANCED PANEL SYSTEMS	<h3>Basic Panels</h3> <h2>Typical Wall Panel Layout - Exploded View</h2>	Not To Scale Rev: 11/30/2021 Drawing Number BP-001



 THERMASTEEL™ ADVANCED PANEL SYSTEMS	Basic Panels	
	Multi Level Wall Panel Connection Section	
	Detail 2	
	Not To Scale	Rev: 11/30/2021
	Drawing Number	BP-011



THERMASTEEL™
ADVANCED PANEL SYSTEMS

Floor Connection

Typical Attachment Of Panels To Wood Trusses - Platform Floor System

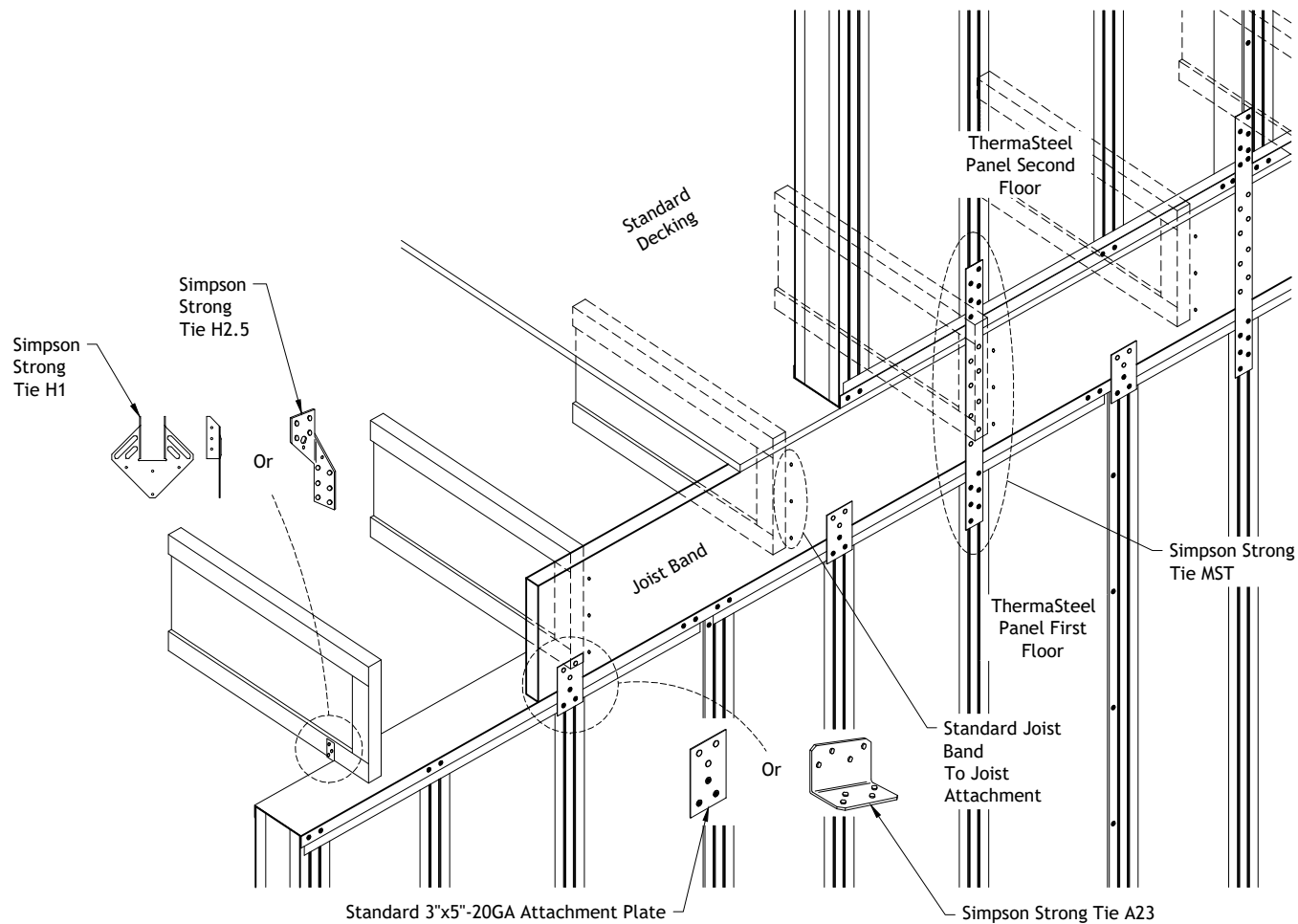
Not To Scale

Rev: 11/30/2021

Drawing Number

FC-011

THERMASTEEL ADVANCED PANEL SYSTEMS - MANUFACTURED BY THERMASTEEL RP Ltd.
609 WEST ROCK ROAD RADFORD, VA 24141 PHONE (540) 633-5000 FAX (540) 633-5001
www.thermasteelinc.com



THERMASTEEL™
ADVANCED PANEL SYSTEMS

Floor Connection

Typical Attachment Of Panels To Wood
I-Beams - Platform Floor System

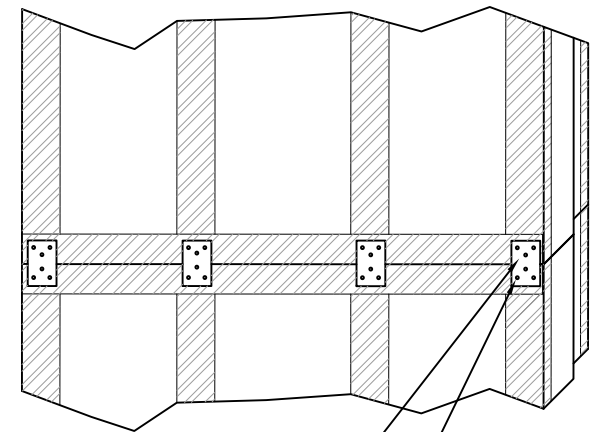
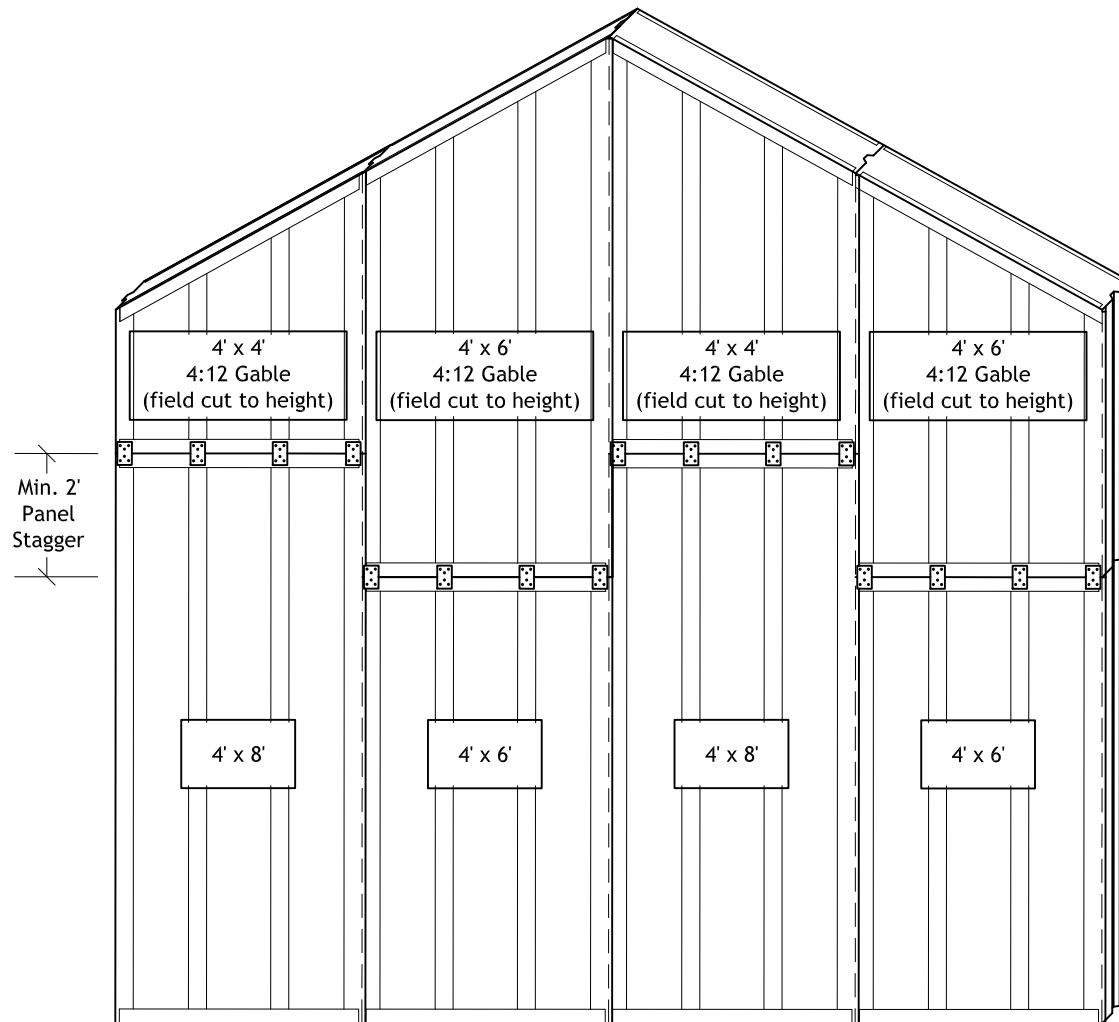
Not To Scale

Rev: 11/30/2021

Drawing Number

FC-012

THERMASTEEL ADVANCED PANEL SYSTEMS - MANUFACTURED BY THERMASTEEL RP Ltd.
609 WEST ROCK ROAD RADFORD, VA 24141 PHONE (540) 633-5000 FAX (540) 633-5001
www.thermasteelinc.com



(1) 3"x5" Attachment
Plate At Each Stud
Location Typical
Interior And Exterior Of
Panel

Minimum (6) #8 Self-tapping
TEK Screw through
Attachment Plate Into Stud
(3) Each Side Of Joint

(Connection Is Typical On Both Interior And Exterior Of Panel)

Panel To Panel Connections

Typical Staggered Panel/Multi-Panel Connection Gable Wall

Not To Scale

Rev: 11/30/2021

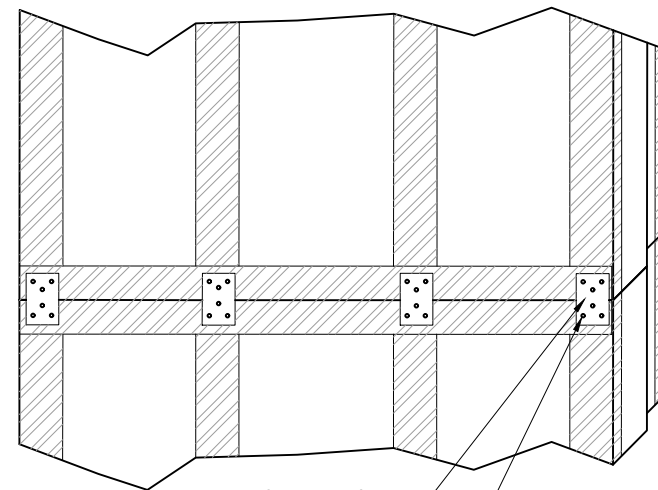
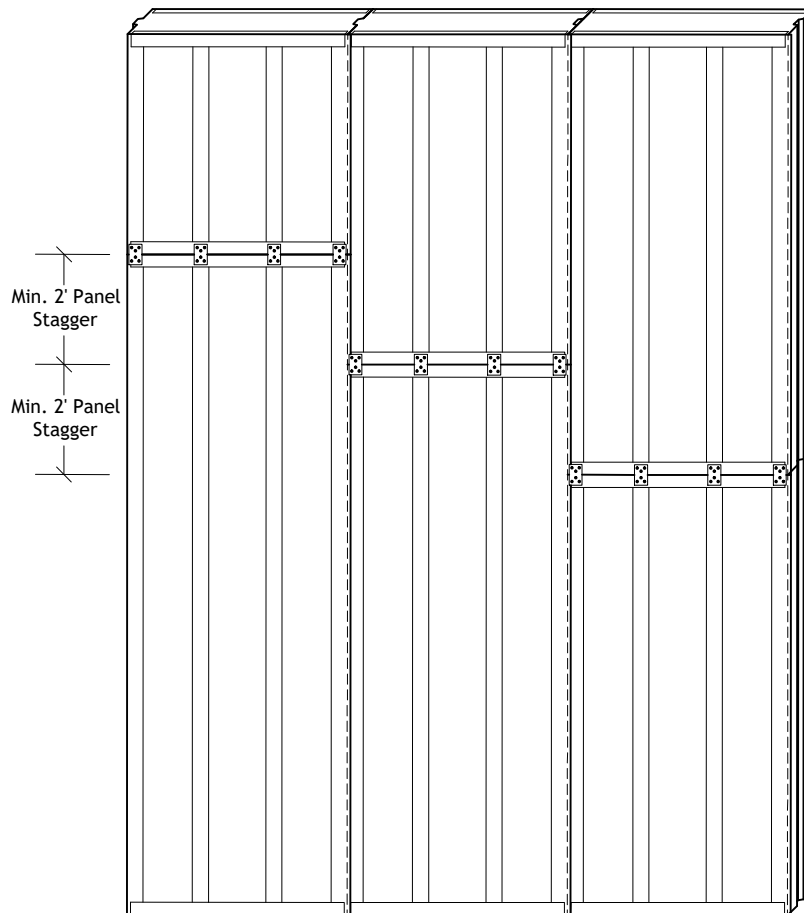
Drawing Number

PP-003



THERMASTEELTM
ADVANCED PANEL SYSTEMS

THERMASTEEL ADVANCED PANEL SYSTEMS - MANUFACTURED BY THERMASTEEL RP Ltd.
609 WEST ROCK ROAD RADFORD, VA 24141 PHONE (540) 633-5000 FAX (540) 633-5001
www.thermasteelinc.com



(1) 3"x5" Attachment Plate At Each Stud Location Typical Interior And Exterior Of Panel

Minimum (6) #8 Self-tapping TEK Screw Thru Attachment Plate Into Stud (3) Each Side Of Joint

(Connection Is Typical On Both Interior And Exterior Of Panel)



THERMASTEEL™
ADVANCED PANEL SYSTEMS

Panel To Panel Connections

Typical Staggered Panel/Multi-Panel Connection

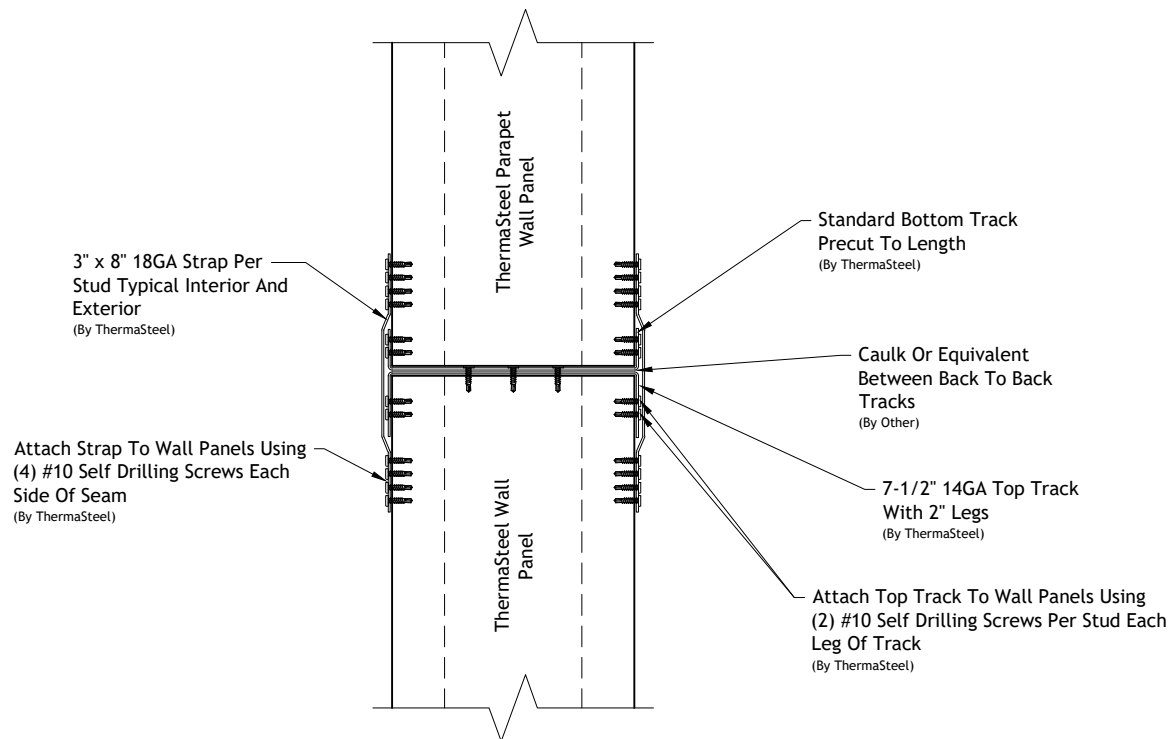
Not To Scale

Rev: 11/30/2021

Drawing Number

PP-003

THERMASTEEL ADVANCED PANEL SYSTEMS - MANUFACTURED BY THERMASTEEL RP Ltd.
609 WEST ROCK ROAD RADFORD, VA 24141 PHONE (540) 633-5000 FAX (540) 633-5001
www.thermasteelinc.com



Panel To Panel Connections

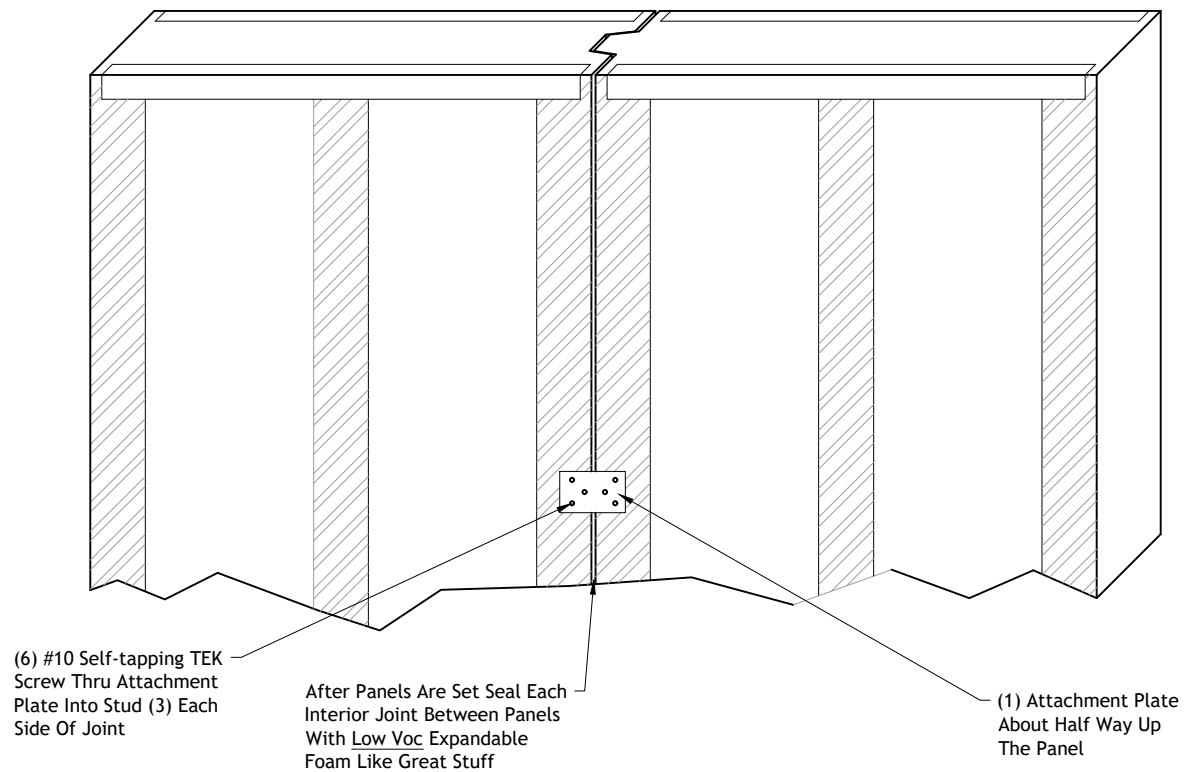
Typical Multi Level Panel Connection Section View

Not To Scale

Rev: 11/30/2021

Drawing Number

PP-001



(Typical For All Panel Greater Than 9' Tall And All Stem/Basement Wall Panels)

(Connection Is Typical On Interior Of Panel Only)



Panel To Panel Connections

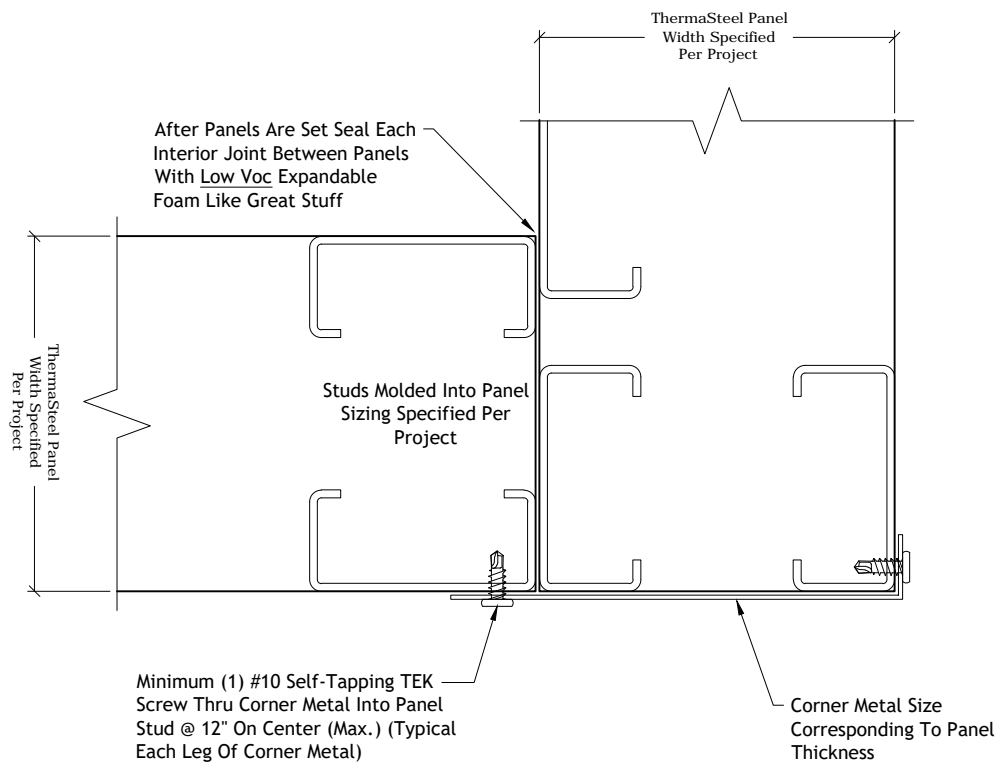
Typical Interior Attachment Plate Connection

Not To Scale

Rev: 11/30/2021

Drawing Number

PP-002



Panel To Panel Connections

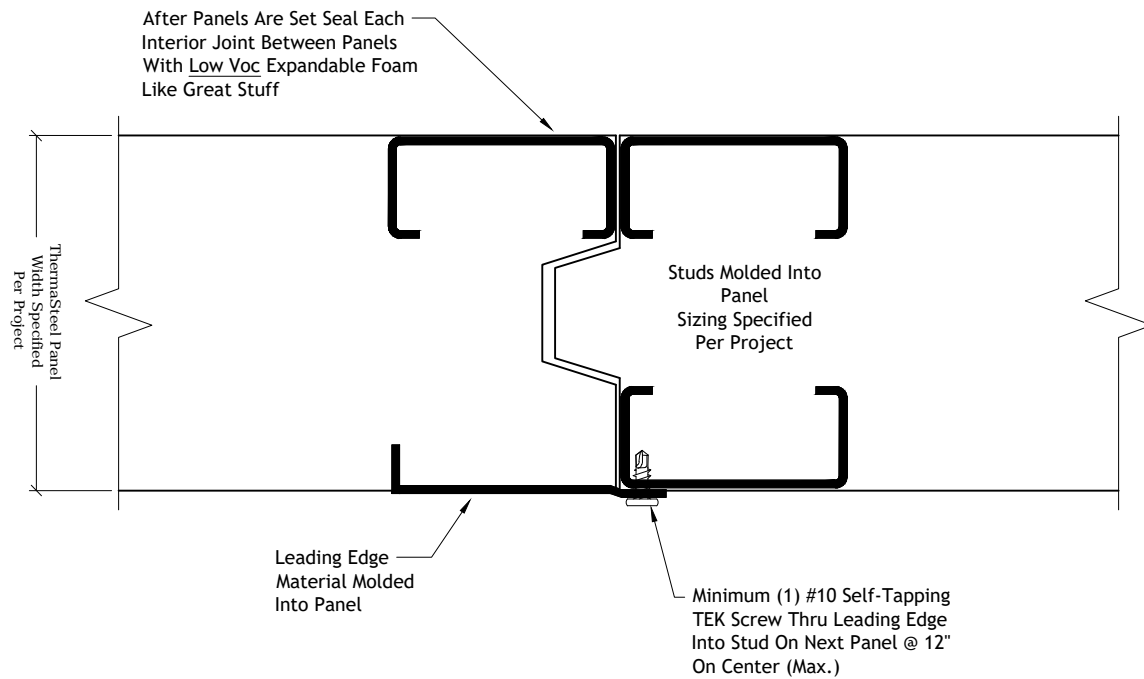
Typical Panel To Panel No Lap Corner Connection

Not To Scale

Rev: 11/30/2021

Drawing Number

PP-004



THERMASTEEL™
ADVANCED PANEL SYSTEMS

Panel To Panel Connections

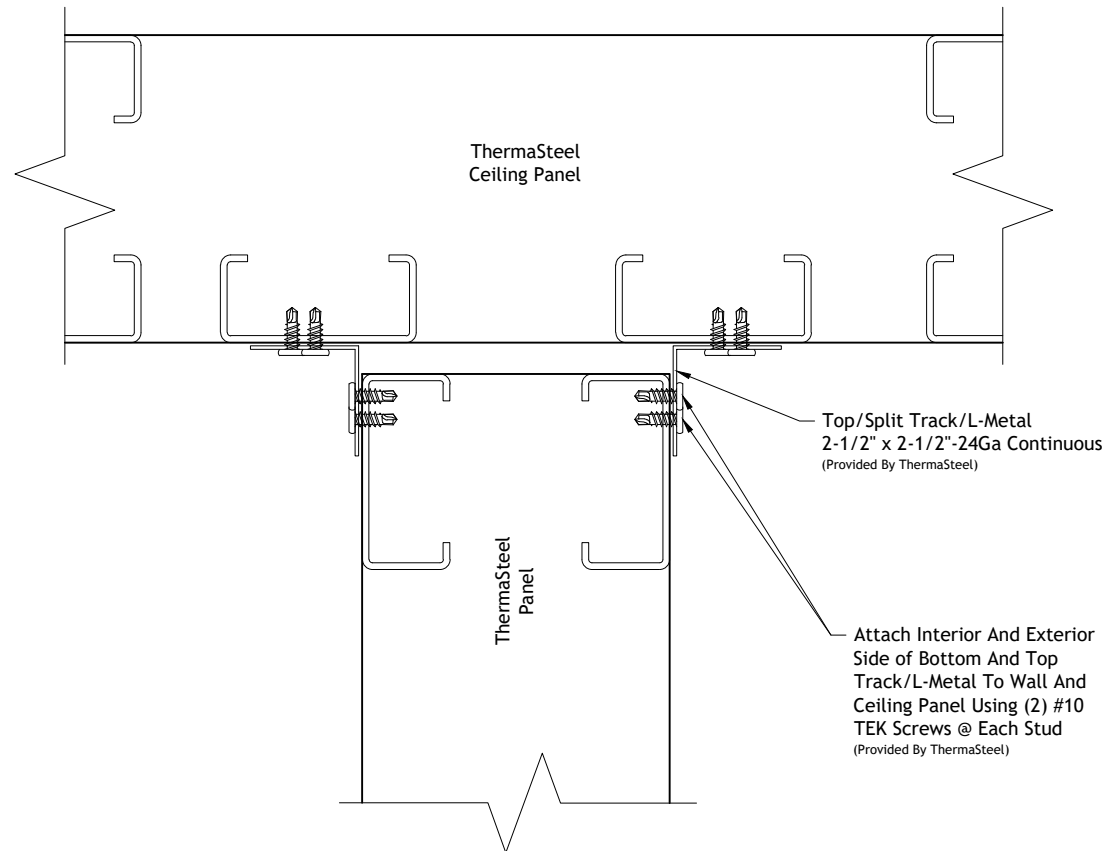
Typical Panel To Panel Joint Connection

Not To Scale

Rev: 11/30/2021

Drawing Number

PP-006



(Connection Is Typical For Interior, 3-1/2" Thick Wall
Only All Others Should Use Connection On CD-1)



Panel To Panel Connections

Typical Intersecting 3 1/2" Panel Connection

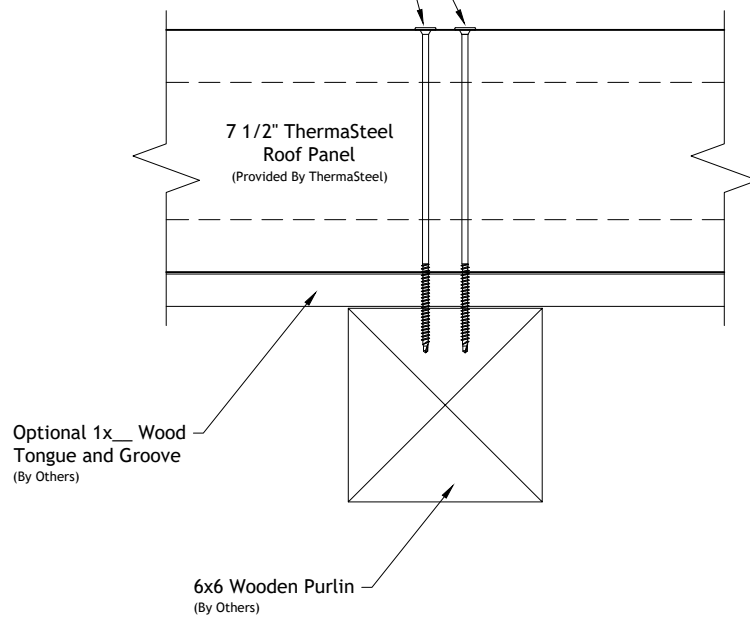
Not To Scale

Rev: 11/30/2021

Drawing Number

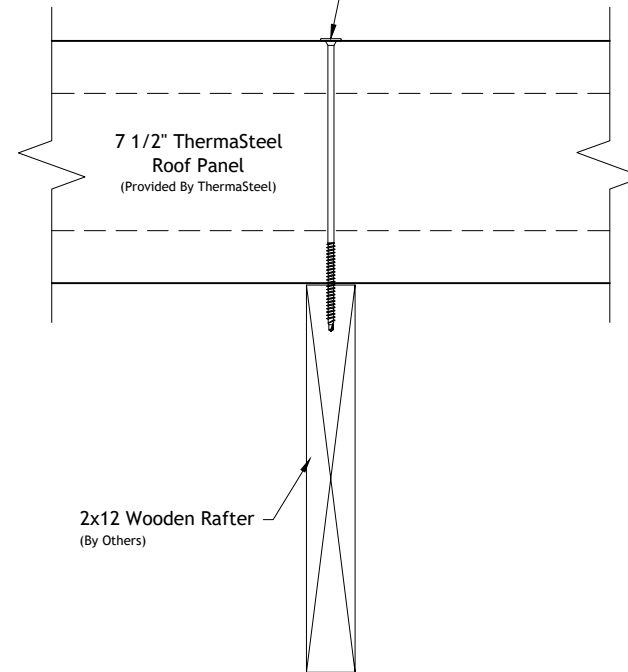
PP-007

Attach Roof Panels To Purlin
Using (2) 10" TruFast Self Drilling Screws
(SIPLD-10000) Per Stud/Purlin Crossing
(By ThermaSteel)



Roof Panel Attachment At Purlin

Attach Roof Panels To Rafter
Using (1) 9" TruFast Self
Drilling Screws (SIPLD-9000)
Per Stud/Roof Rafter
Crossing
(By ThermaSteel)



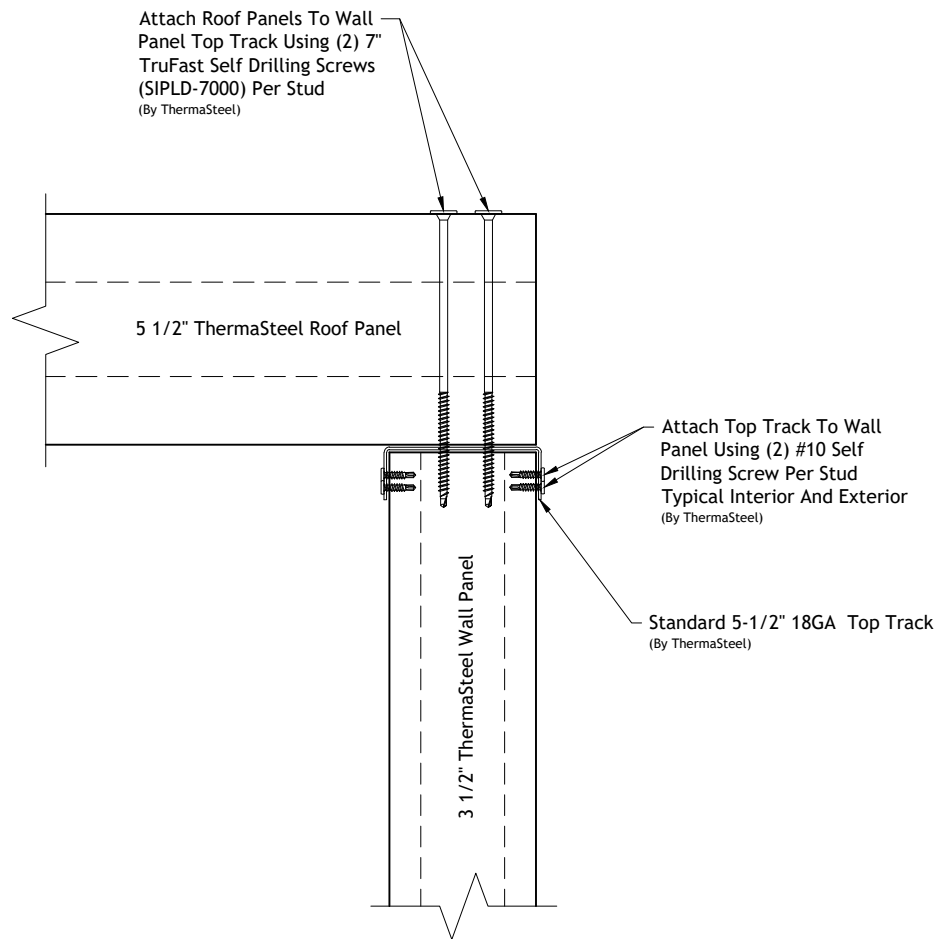
Roof Panel Attachment At Rafter



Roof Connections

Typical Roof Panel Connection At Purlin/Rafter Section View

Not To Scale
Rev: 11/30/2021
Drawing Number
RC-003



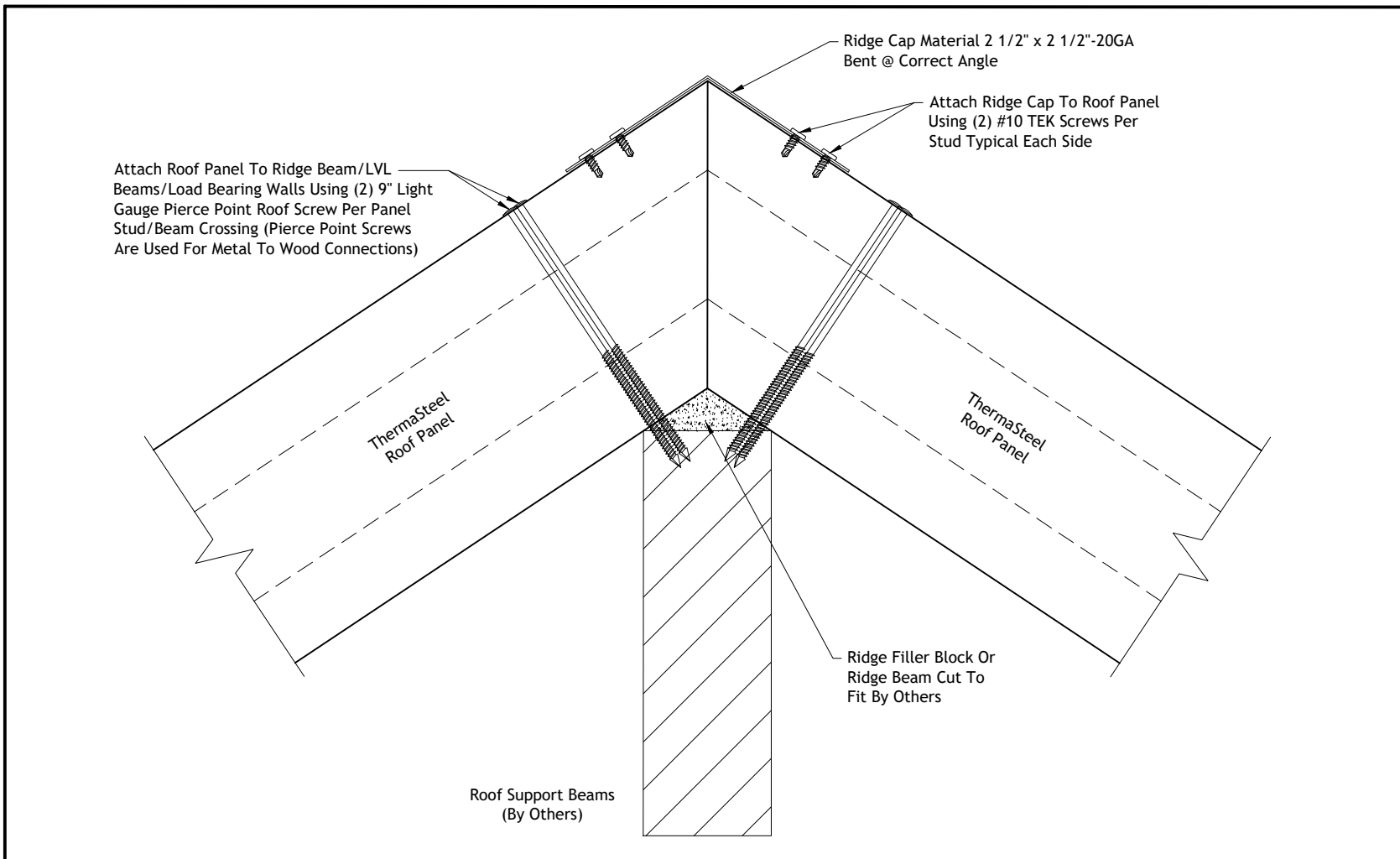
THERMASTEEL™
ADVANCED PANEL SYSTEMS


Roof Connections
Typical Flush Roof Panel
Connection Flush At Gable
Ends - Section View

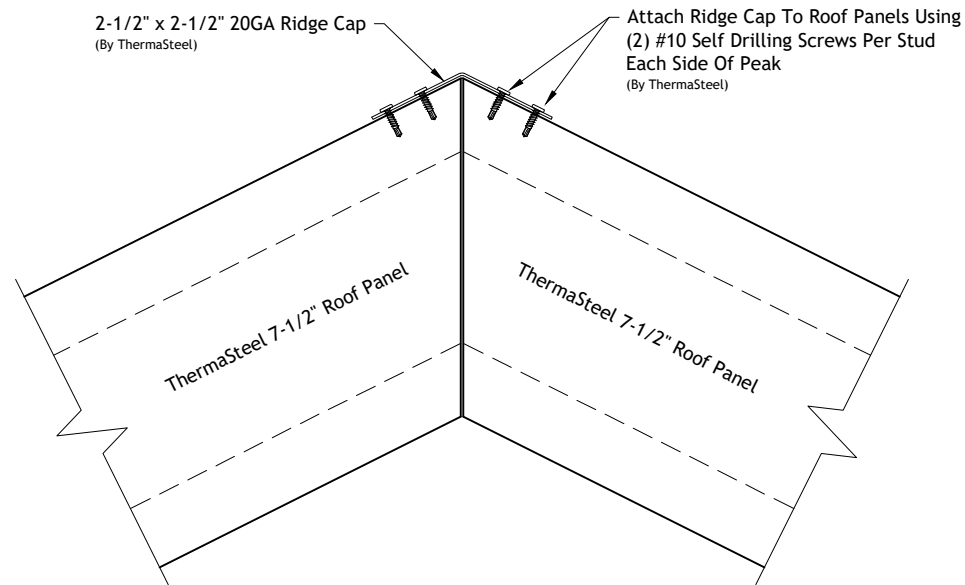
Not To Scale
Rev: 11/30/2021
Drawing Number


RC-004

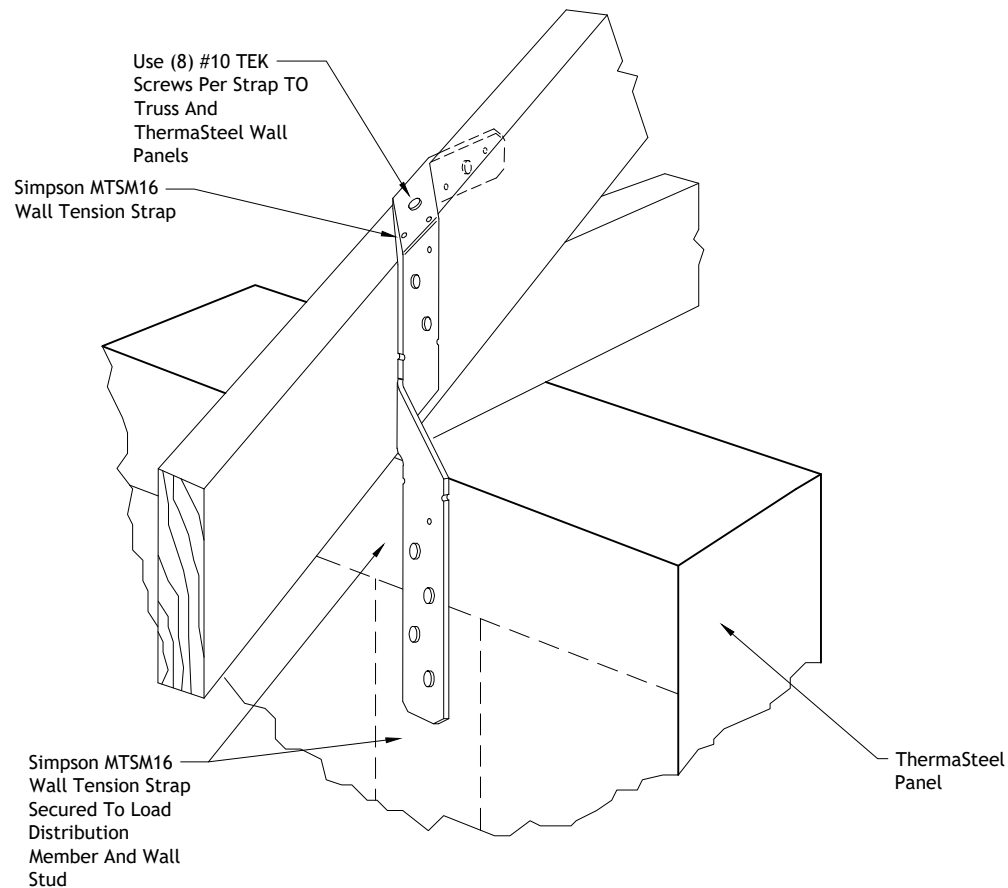
THERMASTEEL ADVANCED PANEL SYSTEMS - MANUFACTURED BY THERMASTEEL RP Ltd.
609 WEST ROCK ROAD RADFORD, VA 24141 PHONE (540) 633-5000 FAX (540) 633-5001
www.thermasteelinc.com



 THERMASTEEL™ ADVANCED PANEL SYSTEMS	Roof Connections	
	Typical Roof Panel Connection At Ridge Beam Section View	
		Not To Scale
		Rev: 11/30/2021
		Drawing Number
		RC-005



 THERMASTEEL™ ADVANCED PANEL SYSTEMS	Roof Connections	
	Typical Ridge Cap Connection Section View	
	Not To Scale	
	Rev: 11/30/2021	
		Drawing Number
		RC-006



THERMASTEEL™
ADVANCED PANEL SYSTEMS

Roof Connections

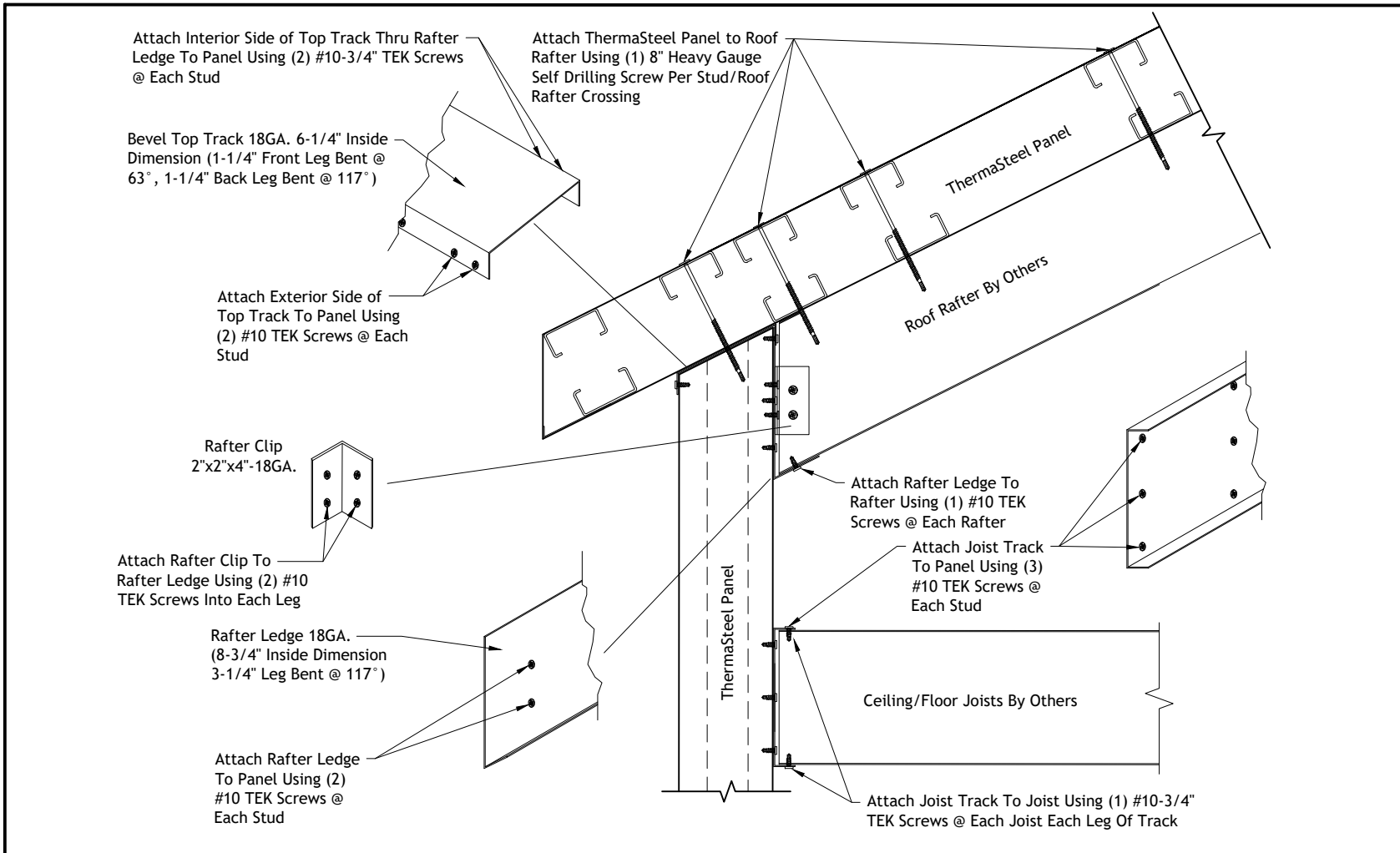
Typical Roof Truss/Simpson Strap To Panel Connection

Not To Scale

Rev: 11/30/2021

Drawing Number

RC-007



THERMASTEEL™
ADVANCED PANEL SYSTEMS

Roof Connections

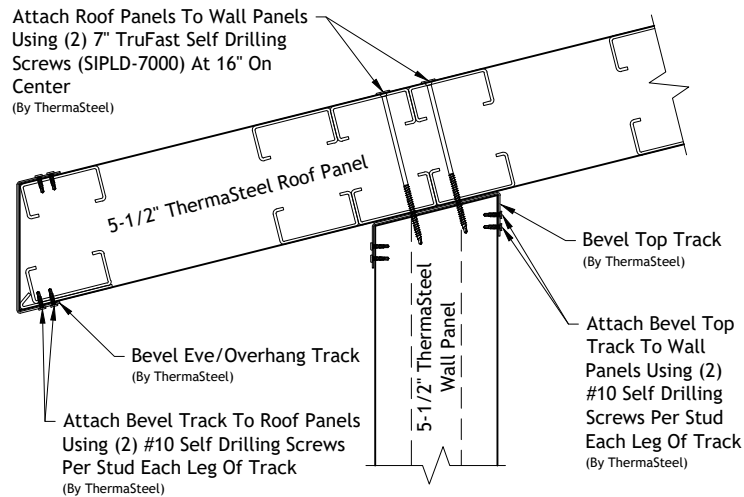
Typical Metal Rafter/Joist To Wall And Roof Panel Connection - Section View

Not To Scale

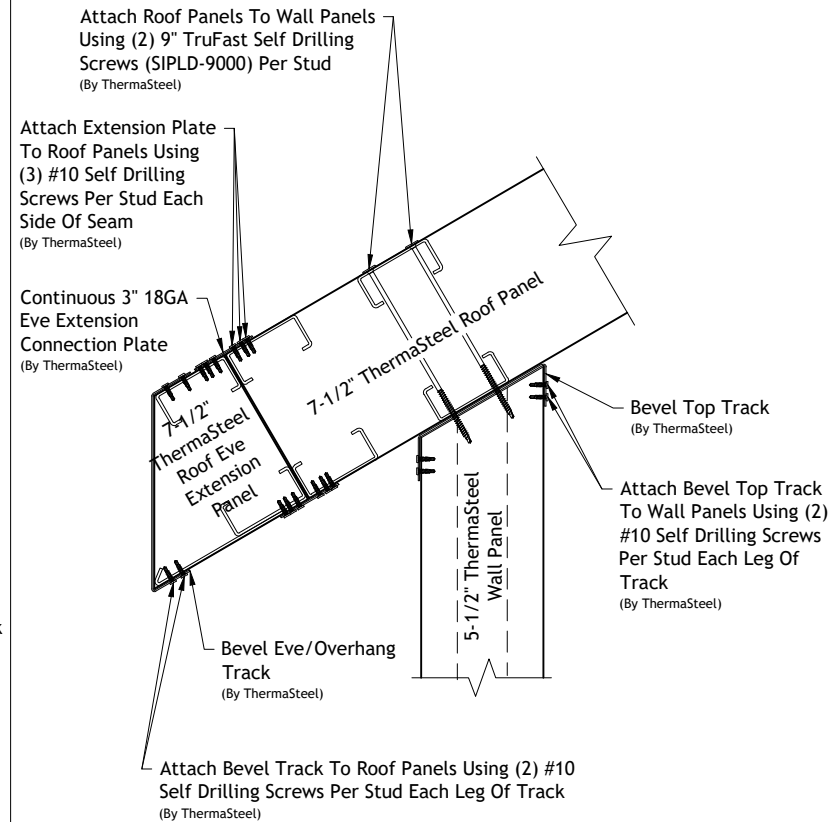
Rev: 11/30/2021

Drawing Number

RC-008



Eve Overhang



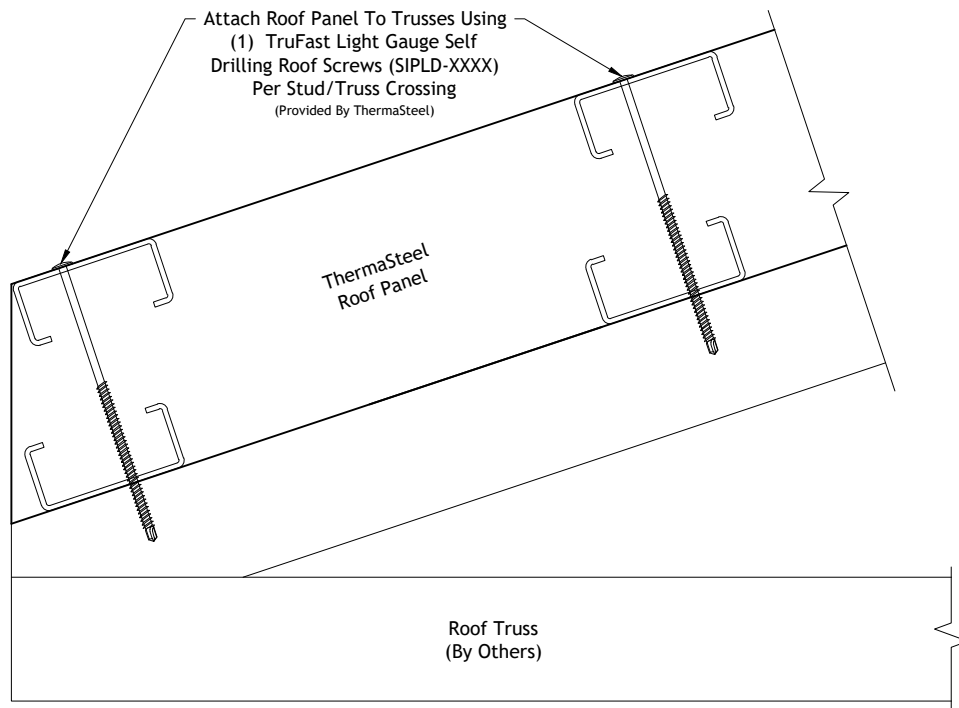
Roof Panel Eve Extension



Roof Connections

Typical Overhang Of Roof Panel Connection Section View

Not To Scale
Rev: 11/30/2021
Drawing Number
RC-009



THERMASTEEL™
ADVANCED PANEL SYSTEMS

Roof Connections

Typical Roof Panel To
Truss Connection
Section View

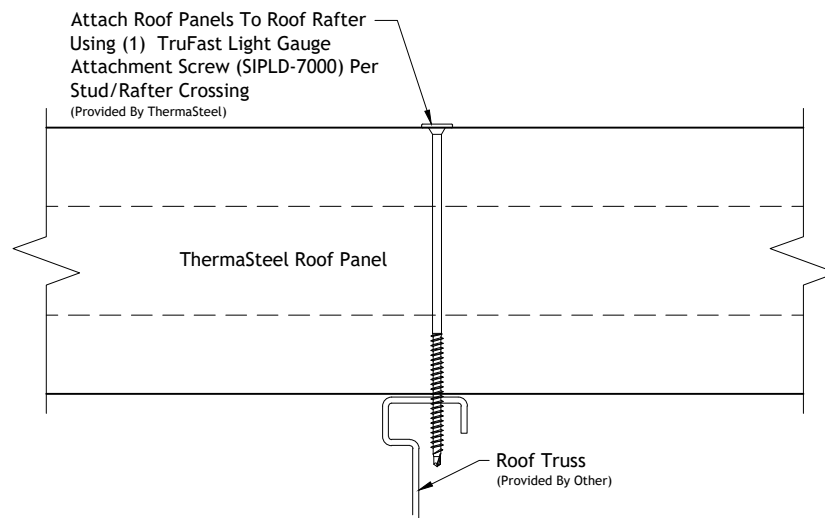
Not To Scale

Rev: 11/30/2021

Drawing Number

RC-010

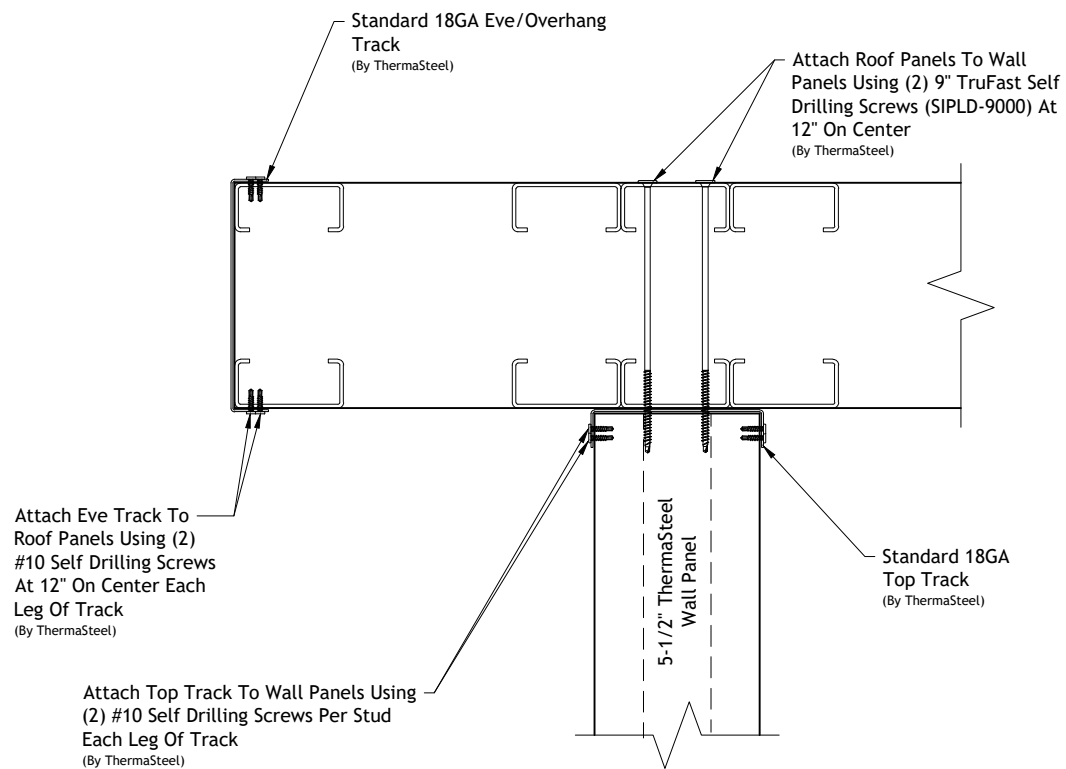
Note: At Perimeter Of Roof
 Attach Roof Panels To Roof Rafter Using
 (2) TruFast Light Gauge Attachment Screw
 (SIPLD-7000) Per Stud/Rafter Crossing
 (Provided By ThermaSteel)



Roof Connections

Typical Roof Panel To Metal Truss Connection Section View

Not To Scale
Rev: 11/30/2021
Drawing Number
RC-011



Roof Connections

Typical Roof Panel Connection At Gable End With Overhang - Section View

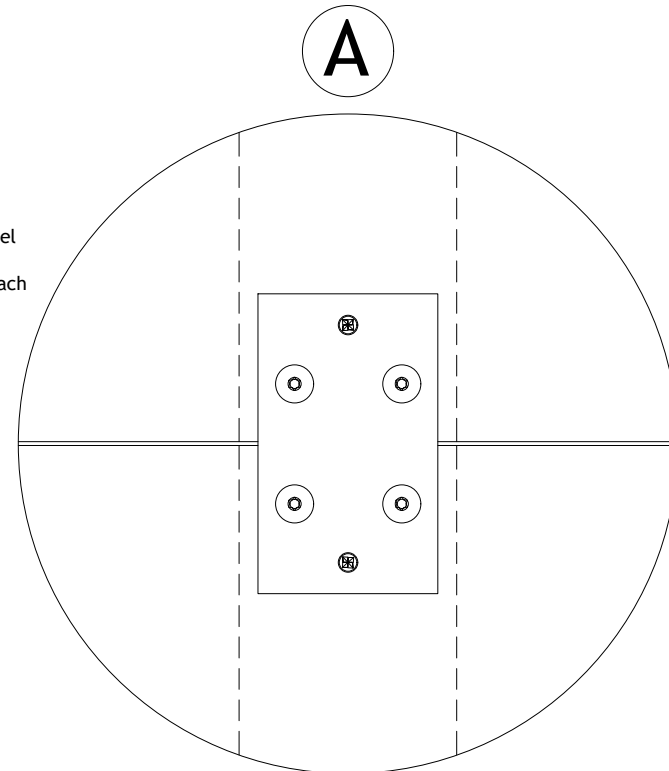
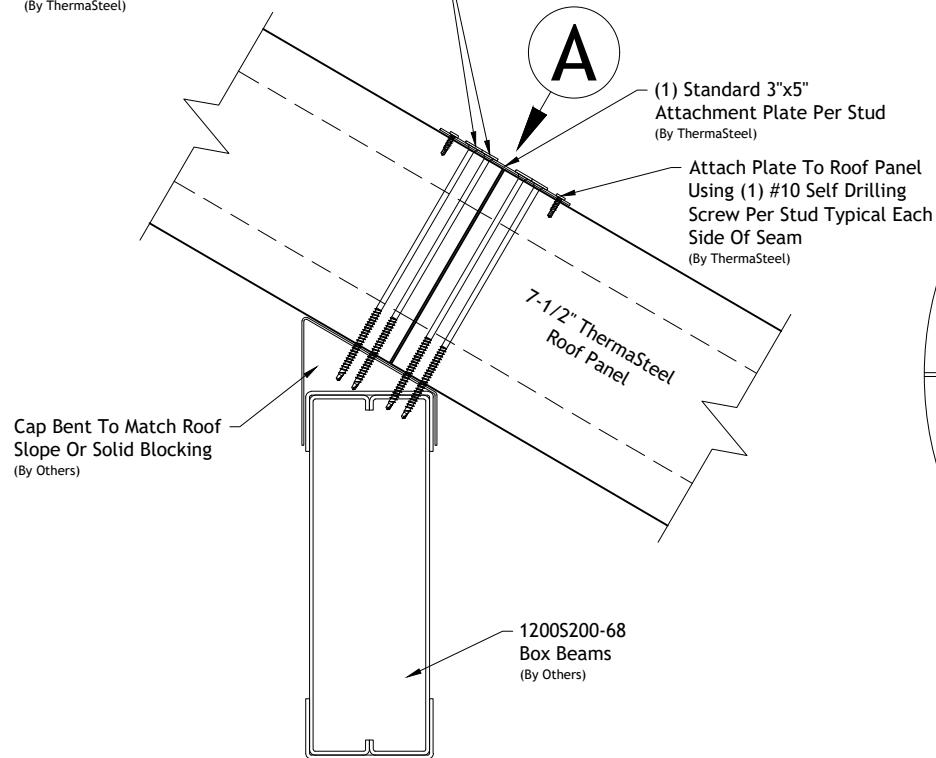
Not To Scale

Rev: 11/30/2021

Drawing Number

RC-013

Attach Roof Panels To Beam Thru Plate Using
(2) 9" TruFast Self Drilling Screws (SIPLD-9000)
Each Side Of Seam Approx. 1" From Seam
(By ThermaSteel)



Roof Connections

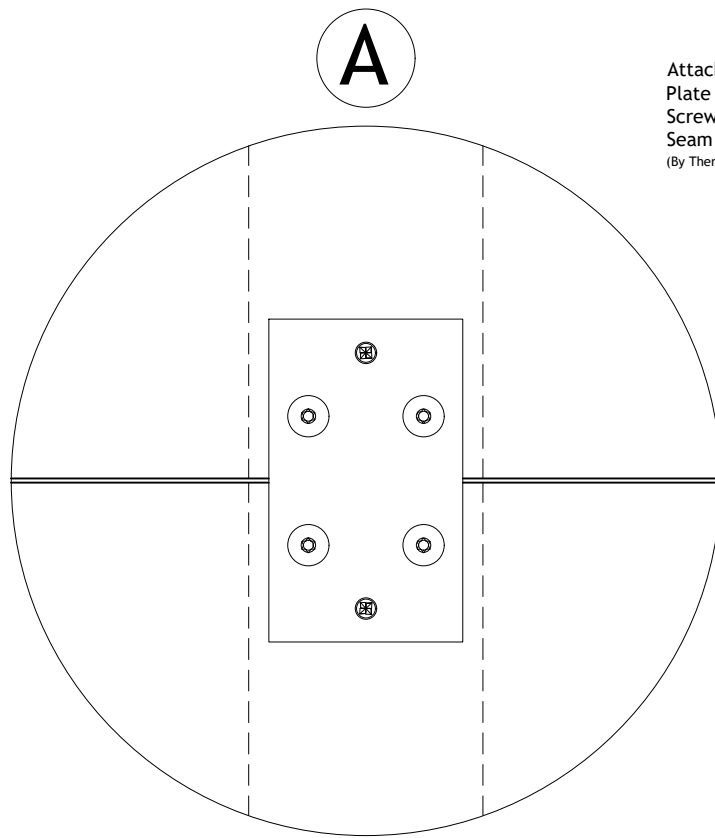
Typical Roof Panel Connection To Wall Over Boxed Beam - Section View

Not To Scale

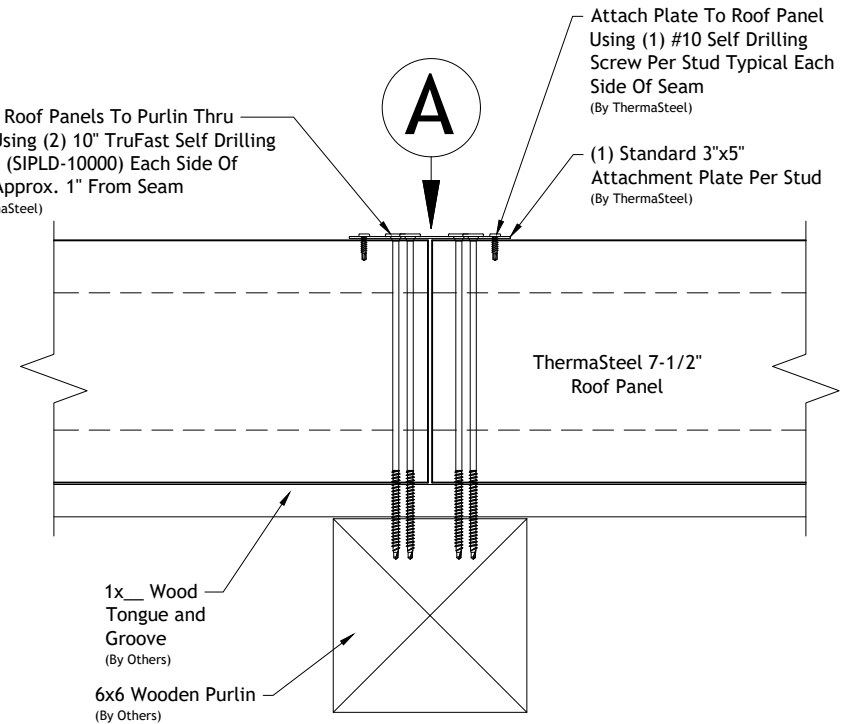
Rev: 11/30/2021

Drawing Number

RC-016



Attach Roof Panels To Purlin Thru Plate Using (2) 10" TruFast Self Drilling Screws (SIPLD-10000) Each Side Of Seam Approx. 1" From Seam
(By ThermoSteel)



Roof Connections

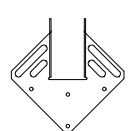
Typical Roof Panel To Panel Connection At Purlin Section View

Not To Scale

Rev: 11/30/2021

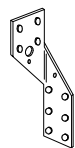
Drawing Number

RC-017



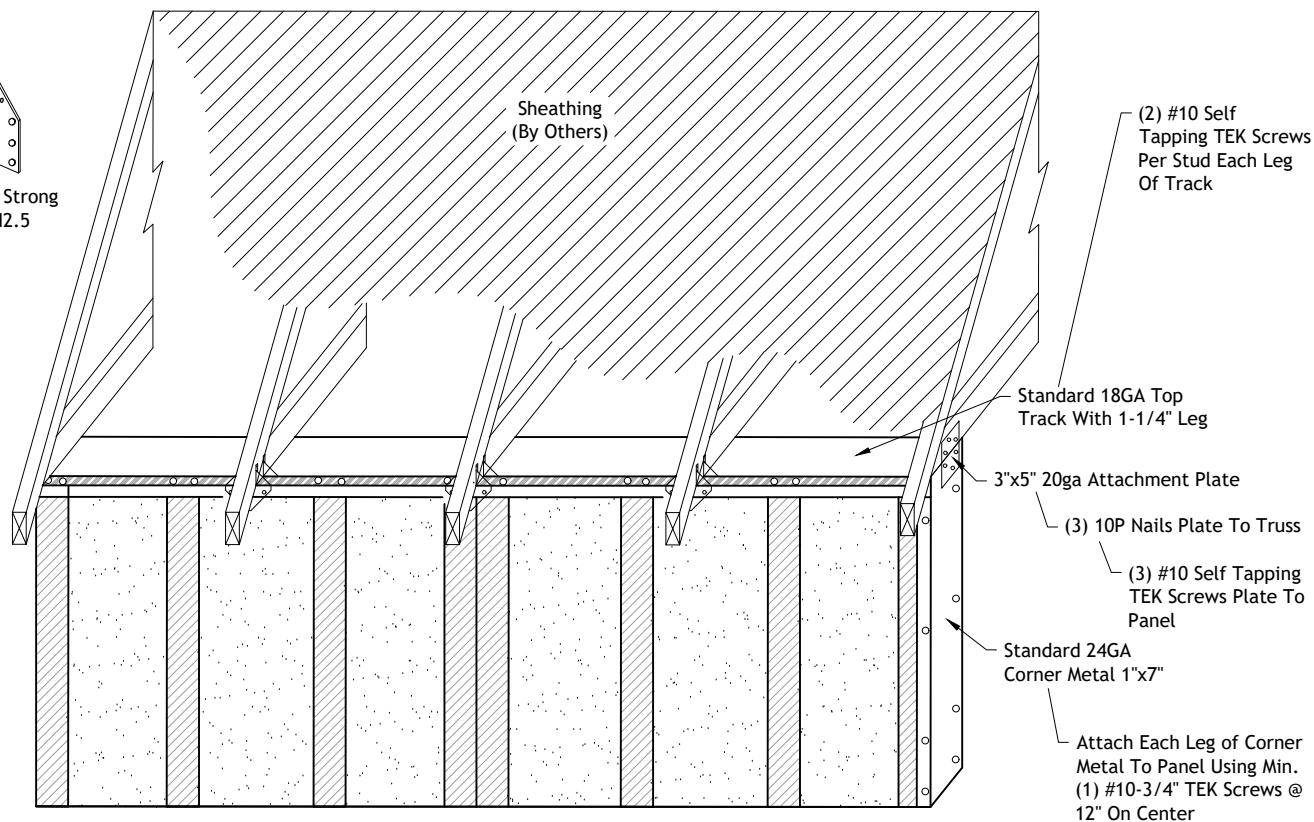
Simpson Strong Tie H1

Or



Simpson Strong Tie H2.5

- #10-3/4" TEK Screws Through Bracket Into Panel As Required
- Simpson N10 Nails Through Bracket Into Truss As Required



Roof Connections

Typical Roof Truss To Wall Panel Connection

Not To Scale

Rev: 11/30/2021

Drawing Number

RC-019



Frequently Asked Questions & Important Links

Q: Do the ThermaSteel panels meet building code requirements?

A: Yes! As demonstrated in our IAPMO ER-128, the panels are compliant with the IRC and IBC for Type I to V construction types.

Q: What type of claddings are compatible with the panels?

A: All claddings, drywall, trim, etc. can be applied directly to the panels without sheathing. You simply screw your cladding into the studs of the panel or apply with EPS safe/compatible adhesives. Please note that petroleum-based adhesives are NOT compatible with EPS.

Q: Are trusses or supports needed for the roof panels?

A: The furthest you can free span with the panels is 12ft. While you may need roof supports for your project, you can reduce trusses/supports from 12-24" OC to 4-12" OC while maintaining superior loading properties, saving over 2/3 of truss costs and installation labor. Refer to the transverse load charts in our ER-128 to determine appropriate support spacing.

Q: Do I need sheathing?

A: No sheathing is required. The only exception is when applying composite shingles to roof panels as roofing nails will not hold in the EPS.

Q: Do I need a vapor barrier?

A: No, ThermaSteel panels do not require any weather barrier on exterior walls above grade.

Q: What tools are required for installation?

A: Basic power and hand tools. For a complete list of recommend tools, refer to the ThermaSteel Installation Guide.

Q: Can I design and/or engineer a project based on ThermaSteel's standard panels?

A: Absolutely! Load charts and engineering data are available in our ER-128. Additionally, tools such as SketchUp are available online for free to help with your design.

Q: What brand windows are compatible with the window panels?

A: Many popular window brands such as Jeld-Wen, Pella, Anderson, and Tafco are compatible. Please cross-reference rough opening size in the Panel Type and Size chart with the manufacturer's rough opening specifications to ensure proper fit.

Q: What brand doors are compatible with the door panels?

A: Rough openings for doors varies widely from manufacturer to manufacturer. To accommodate this, ThermaSteel manufactures the door panels to the door supplier's specifications.

Q: How do I install electrical/plumbing into the panels?

A: Horizontal chases are provided 11" from the bottom of the panel for electrical and small diameter plumbing. For vertical channels, field cut with a hot knife to desired location. Tutorial available in the video gallery at <https://thermasteelinc.com/videos/>.

Q: Do all panels have tongue and groove connection points?

A: Yes. In areas that need a butt joint, simply cut off the tongue and fill the groove side with expandable foam.

Q: Can the panels be modified at the job site?

A: Yes. The panels can be modified with simple hand and power tools. Instructions are available ThermaSteel's Assembly Manual which can be downloaded on the downloads page.

Links

ThermaSteel Website:

<https://thermasteelinc.com/>

Downloads:

<https://thermasteelinc.com/downloads/>

Download our latest IAMPO ER-128 with load charts, connection detail guide, fire testing, and more!

ThermaSteel Builder's Page

<https://thermasteelinc.com/builders/>

Plenty of tips and videos to assist with installation as well as a list of recommended installation tools and products.



Order Form Instructions

1. Enter Panel Type in “Panel Type” column.

Available Panel Types:

- | | |
|----------------|------------------|
| -Exterior Wall | -Exterior Door |
| -Interior Wall | -Interior Door |
| -Roof | -Exterior Window |
| -Gable Cut | |

2. Enter Panel Thickness in “Panel Thickness” column.

Available Panel Thicknesses:

-3.5”, 5.5”, or 7.5”

3. Enter gauge of steel in “Steel Gauge” column.

Available Gauges:

-24, 20, 18, or 16

4. Enter panel height in “Panel Size” column

-Refer to panel chart for available heights.

5. For window, door, or gable panels, enter in desired rough opening or roof pitch in “Rough Opening Size / Gable Pitch” column. Leave blank if type is Exterior Wall, Interior Wall, or Roof.

- Refer to panel chart for available rough opening sizes and roof pitches. Door rough openings shall be provided per the door manufacturer’s specification sheet. Please submit specification sheet along with order form.

6. Enter desired quantity of panels in “Quantity” column.

7. For Accessories, enter accessory type in “Panel Type” column and desired quantity in “Quantity” column.

-Refer to Accessories pricing schedule for types and available quantities.

8. Enter billing and shipping information in relevant boxes.

9. Email completed form to sales@thermasteelinc.com.

Once received, ThermaSteel will create and send an invoice with details on payment options.

Options Include:

1. Check
2. Banking ACH Wire Transfer
3. Credit Card (All Major)

60% of final invoice is due upon receipt of order. Remaining balance is due at time of shipping. Typical lead time is 6-8 weeks.



609 West Rock Road.
 Radford, VA 24141
 O: 540.633.5000
 E: sales@thermasteelinc.com
 W: thermasteelinc.com

Standard Panel Order Form

	Panel Type	Panel Thickness	Steel Gauge	Panel Size	Rough Out Size or Gable Pitch	Quantity
1				4' x		
2				4' x		
3				4' x		
4				4' x		
5				4' x		
6				4' x		
7				4' x		
8				4' x		
9				4' x		
10				4' x		
11				4' x		
12				4' x		
13				4' x		
14				4' x		

Bill To:

Name: _____

Address: _____

Phone: _____

Email: _____

Ship To:

Name: _____

Address: _____

Phone: _____

Email: _____

Internal Use Only

Job #: _____

Date: _____

SP/D: _____